

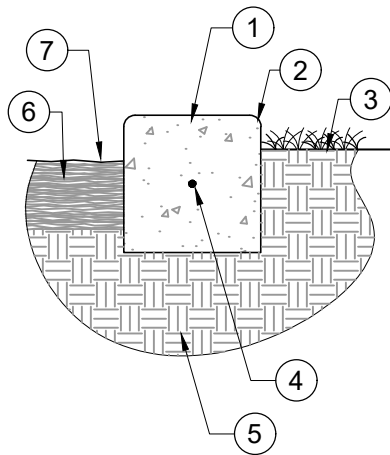
NO.	REVISION DESCRIPTION	DATE

THIS DOCUMENT AND ANY ILLUSTRATIONS HEREON ARE PROVIDED AS STANDARD CONSTRUCTION DETAILS WITHIN HERRIMAN CITY. DEVIATION FROM THIS DOCUMENT REQUIRES APPROVAL OF HERRIMAN CITY. HERRIMAN CITY CANNOT BE HELD LIABLE FOR MISUSE OR CHANGES REGARDING THIS DOCUMENT.



HERRIMAN CITY
ENGINEERING DEPARTMENT
 LANDSCAPE
 TURF GRASS; SOD/SEED

LP-01



NOTE: PROVIDE CONSTRUCTION OR CONTROL JOINTS AT 5' O.C. MAX. AND EXPANSION JOINTS WHERE MOWSTRIP ABUTS ANY MASONRY TYPE IMPROVEMENT.

- ① 6"x6" CONCRETE MOWSTRIP (MIN. 2000 PSI AT 28 DAYS)
- ② 1/2" RADIUS TROWLED EDGES (TYP.)
- ③ FINISH GRADE FOR LAWN AREAS: 1-1/2" BELOW TOP OF CONCRETE FOR SOD
- ④ #3 REBAR CONT. LAP 12" MIN. AT SPLICES.
- ⑤ UNDISTURBED SUBGRADE OR COMPACTED TO 90% MDD PER ASTM D-1557
- ⑥ 3" LAYER MULCH IN PLANTER BEDS (SEE PLANT SCHEDULE FOR MULCH TYPE)
- ⑦ FINISH GRADE AT 2" BELOW TOP OF CONCRETE FOR PLANTING BED AREAS

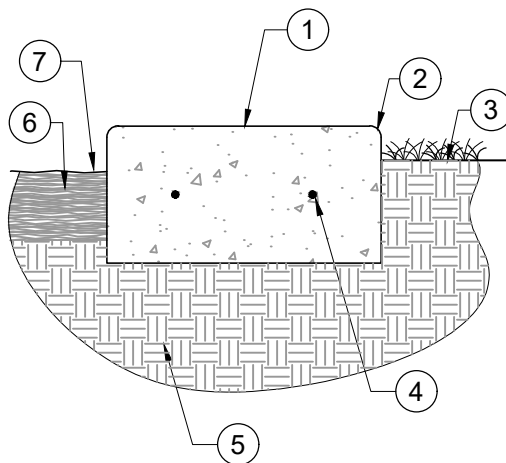
NO.	REVISION DESCRIPTION	DATE

THIS DOCUMENT AND ANY ILLUSTRATIONS HEREON ARE PROVIDED AS STANDARD CONSTRUCTION DETAILS WITHIN HERRIMAN CITY. DEVIATION FROM THIS DOCUMENT REQUIRES APPROVAL OF HERRIMAN CITY. HERRIMAN CITY CANNOT BE HELD LIABLE FOR MISUSE OR CHANGES REGARDING THIS DOCUMENT.



HERRIMAN CITY ENGINEERING DEPARTMENT LANDSCAPE 6" CONCRETE MOWSTRIP
--

LP-02



NOTE: PROVIDE CONSTRUCTION OR CONTROL JOINTS AT 5' O.C. MAX. AND EXPANSION JOINTS WHERE MOWSTRIP ABUTS ANY MASONRY TYPE IMPROVEMENT.

- ① 12"x6" CONCRETE MOPWSTRIP (MIN. 2000 PSI AT 28 DAYS)
- ② 1/2" RADIUS TROWLED EDGES (TYP.)
- ③ FINISH GRADE FOR LAWN AREAS: 1-1/2" BELOW TOP OF CONCRETE FOR SOD
- ④ #3 REBAR CONT. LAP 12" AT SPLICES.
- ⑤ UNDISTURBED SUBGRADE OR COMPACTED TO 90% MDD PER ASTM D-1557
- ⑥ 3" LAYER MULCH IN PLANTER BEDS (SEE PLANT SCHEDULE FOR MULCH TYPE)
- ⑦ FINISH GRADE AT 2" BELOW TOP OF CONCRETE FOR PLANTING BED AREAS

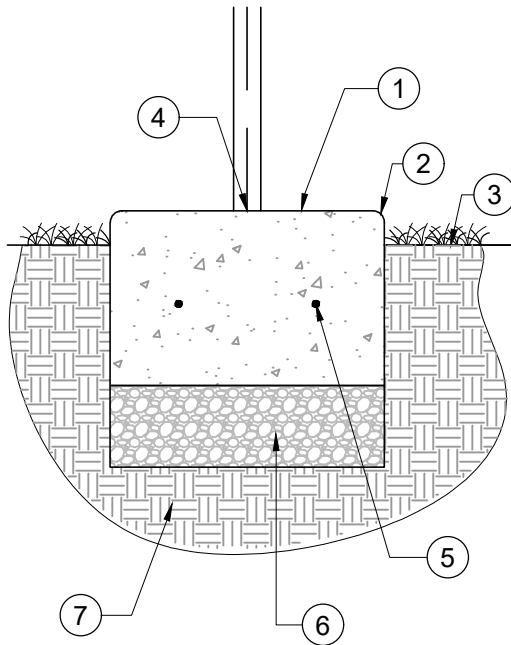
NO.	REVISION DESCRIPTION	DATE

THIS DOCUMENT AND ANY ILLUSTRATIONS HEREON ARE PROVIDED AS STANDARD CONSTRUCTION DETAILS WITHIN HERRIMAN CITY. DEVIATION FROM THIS DOCUMENT REQUIRES APPROVAL OF HERRIMAN CITY. HERRIMAN CITY CANNOT BE HELD LIABLE FOR MISUSE OR CHANGES REGARDING THIS DOCUMENT.



HERRIMAN CITY ENGINEERING DEPARTMENT LANDSCAPE 12" CONCRETE MOWSTRIP

LP-03



- ① 18"x8" CONCRETE MOPWSTRIP
(MIN. 2000 PSI AT 28 DAYS)
- ② $\frac{3}{4}$ " RADIUS TROWLED EDGES (TYP.)
- ③ FINISH GRADE: 1-1/2" BELOW TOP
OF CONCRETE FOR SOIL/SOD
- ④ FENCE AT CENTERLINE
- ⑤ #3 REBAR CONT. LAP 12" AT
SPLICES.
- ⑥ 4" COMPACTED ROADBASE 95%
MDD PER ASTM D-1557
- ⑦ UNDISTURBED SUBGRADE OR
COMPACTED TO 90% MDD PER
ASTM D-1557

NOTE: CONTRACTION JOINTS EVERY
10' MAXIMUM AND EXPANSION
JOINTS EVERY 50' MAXIMUM

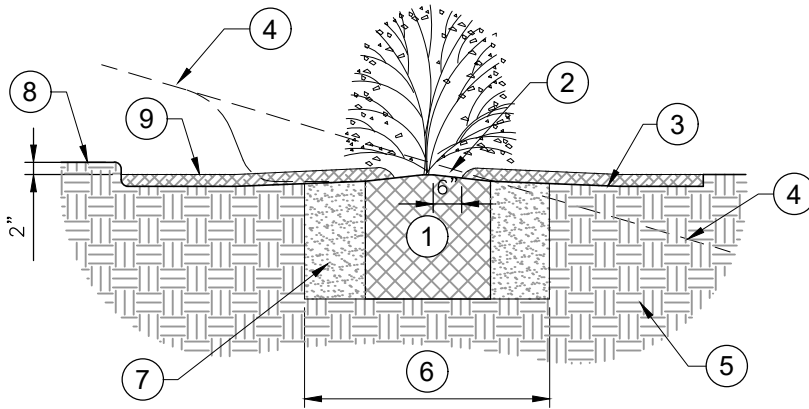
NO.	REVISION DESCRIPTION	DATE

THIS DOCUMENT AND ANY ILLUSTRATIONS
HEREON ARE PROVIDED AS STANDARD
CONSTRUCTION DETAILS WITHIN HERRIMAN
CITY. DEVIATION FROM THIS DOCUMENT
REQUIRES APPROVAL OF HERRIMAN CITY.
HERRIMAN CITY CANNOT BE HELD LIABLE
FOR MISUSE OR CHANGES REGARDING THIS
DOCUMENT.



HERRIMAN CITY
ENGINEERING DEPARTMENT
LANDSCAPE
18" MOWSTRIP

LP-04



- ① ROOT BALL
- ② CROWN – AT FINISHED GRADE
- ③ FINISHED GRADE
- ④ FINISHED GRADE AT SLOPE (WHERE OCCURS)
- ⑤ UNDISTURBED SOIL
- ⑥ 2X ROOTBALL DIA. MIN.
- ⑦ BACKFILL MIX – SEE PLANTING NOTES
- ⑧ TOP OF PAVING (WHERE APPLICABLE)
- ⑨ 3" LAYER OF MULCH (SEE PLANT SCHEDULE FOR MULCH TYPE)

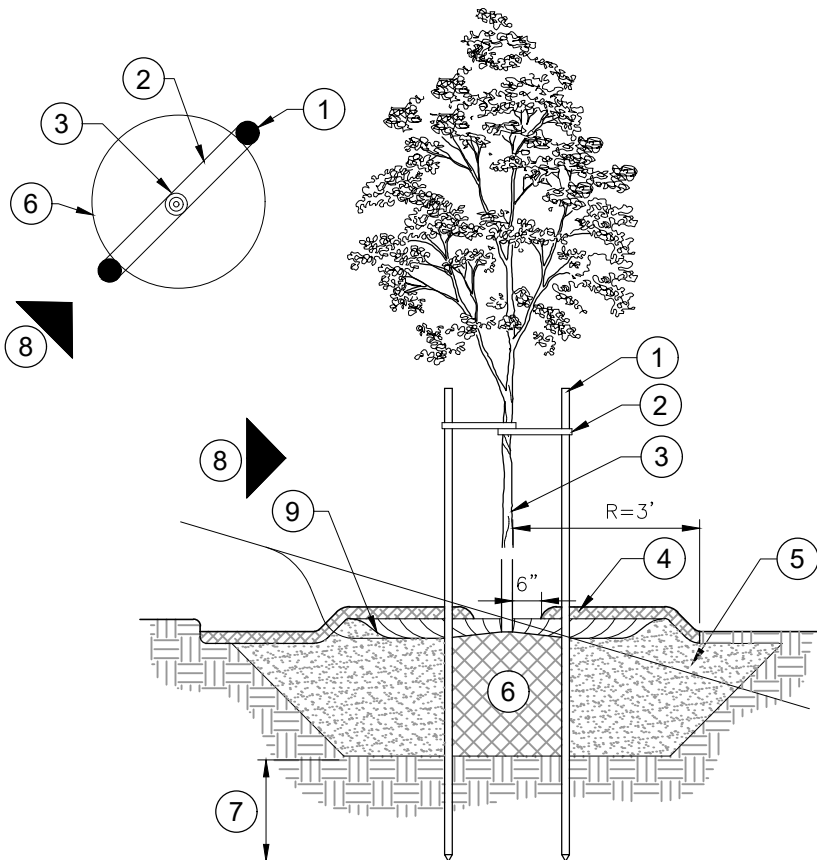
NO.	REVISION DESCRIPTION	DATE

THIS DOCUMENT AND ANY ILLUSTRATIONS HEREON ARE PROVIDED AS STANDARD CONSTRUCTION DETAILS WITHIN HERRIMAN CITY. DEVIATION FROM THIS DOCUMENT REQUIRES APPROVAL OF HERRIMAN CITY. HERRIMAN CITY CANNOT BE HELD LIABLE FOR MISUSE OR CHANGES REGARDING THIS DOCUMENT.



HERRIMAN CITY
ENGINEERING DEPARTMENT
LANDSCAPE
PERENNIAL PLANTING

LP-05

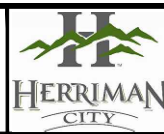


- ① 2" DIA. OR 2"x2" SQ. x 10' STRAIGHT WOODEN STAKE (2 REQUIRED)
- ② V.I.T. CINCH-TIE VINYL TREE TIE (2 PER STAKE, LENGTH AS REQUIRED). SECURE TO STAKE W/ GALV. NAIL, 1 PER TIE.
- ③ TREE TRUNK
- ④ 3" LAYER MULCH AROUND EACH TREE (3' RADIUS CIRCLE WHEN IN TURF)
- ⑤ SEE TREE/SHRUB PLANTING DETAIL
- ⑥ ROOT BALL
- ⑦ 24" MIN.
- ⑧ PREVAILING WIND DIRECTION
- ⑨ WATERING BASIN - SEE TREE/SHRUB PLANTING DETAIL

NOTE: STAKES SHALL BE REMOVED AFTER 1 FULL GROWING SEASON.

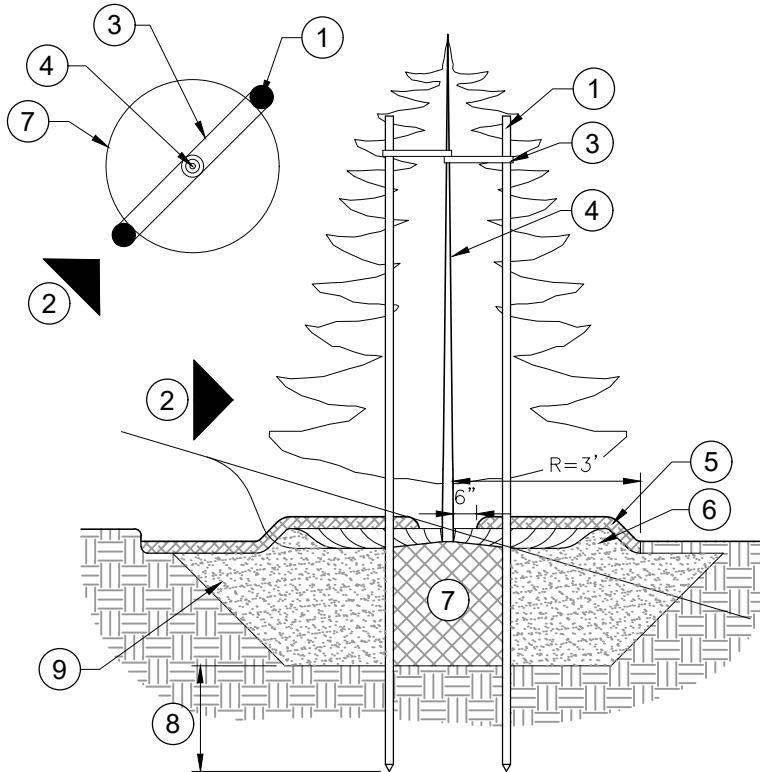
NO.	REVISION DESCRIPTION	DATE

THIS DOCUMENT AND ANY ILLUSTRATIONS HEREON ARE PROVIDED AS STANDARD CONSTRUCTION DETAILS WITHIN HERRIMAN CITY. DEVIATION FROM THIS DOCUMENT REQUIRES APPROVAL OF HERRIMAN CITY. HERRIMAN CITY CANNOT BE HELD LIABLE FOR MISUSE OR CHANGES REGARDING THIS DOCUMENT.



HERRIMAN CITY
ENGINEERING DEPARTMENT
LANDSCAPE
 DECIDUOUS TREE STAKING W/ WATERING BASIN

LP-06



NOTE: STAKES SHALL BE REMOVED AFTER 1 FULL GROWING SEASON.

- ① 2" DIA. OR 2"x2" SQ. X 10' STRAIGHT WOODEN STAKE (2 REQUIRED)
- ② PREVAILING WIND DIRECTION
- ③ V.I.T. CINCH-TIE VINYL TREE TIE (1 PER STAKE, LENGTH AS REQUIRED). SECURE TO STAKE W/ GALV. NAIL, 1 PER TIE.
- ④ TREE TRUNK
- ⑤ 3" LAYER MULCH AROUND EACH TREE (3' RADIUS CIRCLE WHEN IN TURF)
- ⑥ WATERING BASIN - SEE TREE/SHRUB PLANTING DETAIL
- ⑦ ROOTBALL
- ⑧ 24" MIN.
- ⑨ SEE TREE/SHRUB PLANTING DETAIL

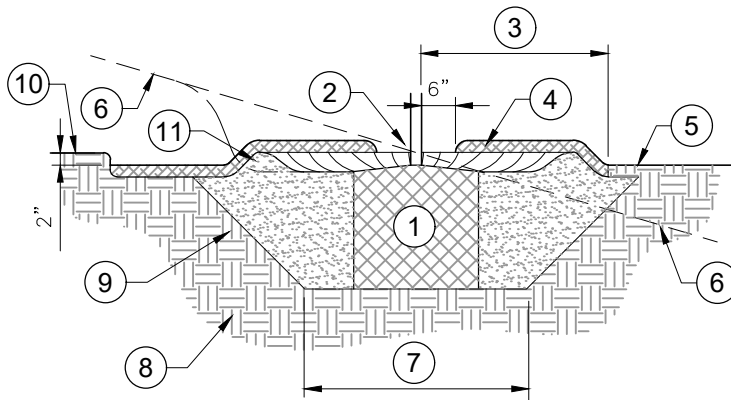
NO.	REVISION DESCRIPTION	DATE

THIS DOCUMENT AND ANY ILLUSTRATIONS HEREON ARE PROVIDED AS STANDARD CONSTRUCTION DETAILS WITHIN HERRIMAN CITY. DEVIATION FROM THIS DOCUMENT REQUIRES APPROVAL OF HERRIMAN CITY. HERRIMAN CITY CANNOT BE HELD LIABLE FOR MISUSE OR CHANGES REGARDING THIS DOCUMENT.



HERRIMAN CITY
ENGINEERING DEPARTMENT
LANDSCAPE
EVERGREEN TREE STAKING W/ WATERING BASIN

LP-07



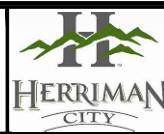
- ① ROOTBALL
- ② CROWN – APPROXIMATELY 1" ABOVE FINISH GRADE
- ③ 3' RADIUS CIRCLE OF MULCH WHEN TREE IS LOCATED IN TURF
- ④ 3" LAYER OF MULCH
- ⑤ FINISHED GRADE
- ⑥ FINISHED GRADE AT SLOPE (WHERE SLOPE OCCURS)
- ⑦ 2X ROOTBALL DIA. MIN. W/ 45 DEGREE SIDES
- ⑧ UNDISTURBED SOIL
- ⑨ BACKFILL MIX (SEE PLANTING NOTES)
- ⑩ TOP OF PAVING (WHERE APPLICABLE)
- ⑪ 3" HIGH WATERING BASIN

NOTES:

1. PRUNE CIRCLING ROOTS, PROTRUDING ROOT STUBS, AND FIBROUS MATTED ROOTS FLUSH WITH THE ROOT BALL. HANDLE ROOT BALL WITH CARE. MINIMIZE CRUMBLING, CRACKING, AND SPLITTING.
2. AFTER PLACING THE TREE IN THE HOLE, REMOVE WIRE AND BURLAP. LEAVE NO TWINE OR BURLAP ON OR NEAR THE SURFACE OF THE BALL OR AROUND THE TRUNK. CUT VERTICAL SLITS IN BURLAP THAT REMAINS. DO NOT FOLD BURLAP INTO THE HOLE.
3. SLIDE ROOT BALLS OUT OF CONTAINERS. DO NOT PULL ON THE TRUNK. IF THE ROOT BALL IS TOO LARGE, CUT THE CONTAINER OFF AFTER THE TREE IS PLACED IN THE PLANTING HOLE.
4. USE SOIL REMOVED FROM THE HOLE AS BACKFILL. IF SOIL IS BASE COURSE MATERIAL, MIX WITH 1/3 ORGANIC MULCH. MIX THOROUGHLY.
5. COMPACT BACKFILL IN 6" LAYERS. WATER. ALLOW WATER TO SOAK DEEPLY INTO THE SOIL. MAKE SURE ROOT BALL GETS THOROUGHLY WET.
6. FERTILIZER SHALL BE PROVIDED IN EACH BASIN AT THE TIME OF INSTALLATION. FERTILIZER APPLICATION SHALL BE PER MANUFACTURER'S RECOMMENDATIONS.

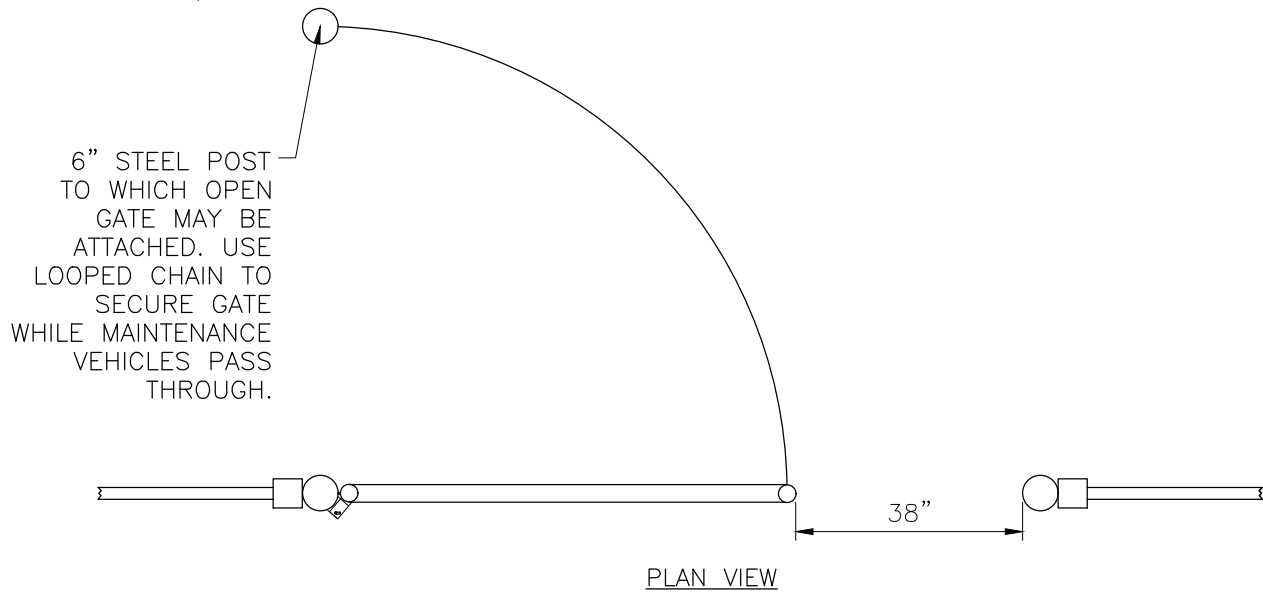
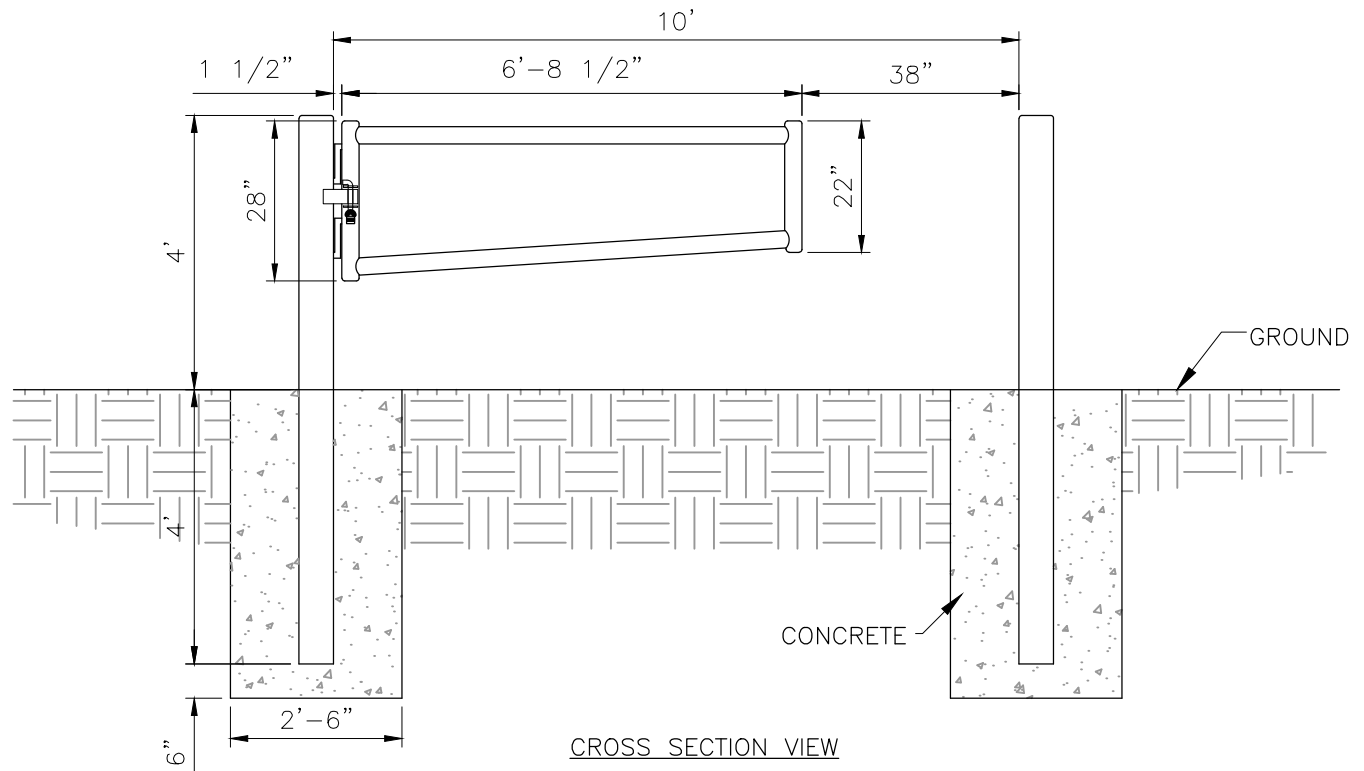
NO.	REVISION DESCRIPTION	DATE

THIS DOCUMENT AND ANY ILLUSTRATIONS HEREON ARE PROVIDED AS STANDARD CONSTRUCTION DETAILS WITHIN HERRIMAN CITY. DEVIATION FROM THIS DOCUMENT REQUIRES APPROVAL OF HERRIMAN CITY. HERRIMAN CITY CANNOT BE HELD LIABLE FOR MISUSE OR CHANGES REGARDING THIS DOCUMENT.



HERRIMAN CITY
ENGINEERING DEPARTMENT
LANDSCAPE
 TREE/SHRUB PLANTING W/ WATERING BASIN

LP-08



NOTES:

1. GATE MUST SWING INTO HERRIMAN CITY PROPERTY.
2. PRIME AND PAINT GATE ASSEMBLY GLOSSY BLACK.
3. THE PIPE FOR THE POST IS 6" SCHEDULE 40 STEEL PIPE.
4. THE GATE SHALL BE CONSTRUCTED OF 3" SCHEDULE 40 STEEL PIPE.
5. CUT AND WELD PIECES TO FIT. GRIND TO SMOOTH FINISH.
6. CONCRETE SHALL BE MIN. 3000 PSI AT 28 DAYS.

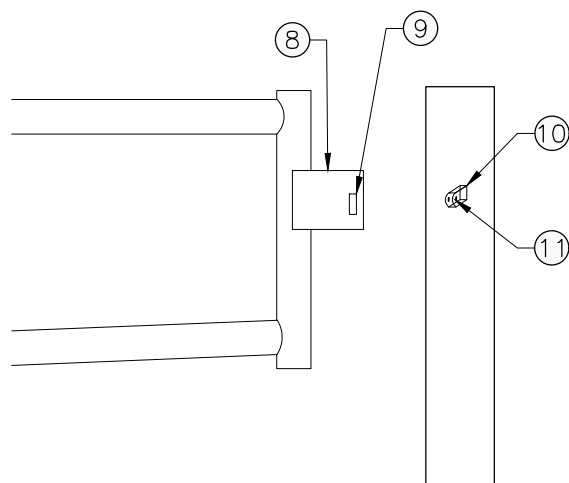
NO.	REVISION DESCRIPTION	DATE

THIS DOCUMENT AND ANY ILLUSTRATIONS HEREON ARE PROVIDED AS STANDARD CONSTRUCTION DETAILS WITHIN HERRIMAN CITY. DEVIATION FROM THIS DOCUMENT REQUIRES APPROVAL OF HERRIMAN CITY. HERRIMAN CITY CANNOT BE HELD LIABLE FOR MISUSE OR CHANGES REGARDING THIS DOCUMENT.



HERRIMAN CITY
ENGINEERING DEPARTMENT
LANDSCAPE
GATE ASSEMBLY FOR TRAIL HEAD (OPTION A)

LP-09



- ① HINGES MUST BE HEAVY DUTY HINGES FROM METAL MART PROPERLY WELDED TO POST AND GATE
- ② 3" SCHEDULE 40 PIPE TYP.
- ③ CONCRETE FOUNDATION 4,000 PSI
- ④ 3" THICK ASPHALT PER CITY
- ⑤ 6" THICK UNTREATED BASE COURSE COMPACTED PER CITY
- ⑥ 6" DIAMETER SCHEDULE 40 PIPE FILLED WITH CONCRETE TYP.
- ⑦ PROPERLY PREPARED SUBGRADE OF FILL COMPACTED PER GEOTECHNICAL REPORT AND SPECIFICATIONS
- ⑧ 0.25"x7"x5" STEEL PLATE
- ⑨ 0.75"x1.25" CUTOUT TO MATCH LOCKING STUD ON 6" DIAMETER POST
- ⑩ 1.25"x0.5"x1" STEEL PLATE
- ⑪ HOLE FOR LOCK PER CITY

NO.	REVISION DESCRIPTION	DATE

THIS DOCUMENT AND ANY ILLUSTRATIONS
HEREON ARE PROVIDED AS STANDARD
CONSTRUCTION DETAILS WITHIN HERRIMAN
CITY. DEVIATION FROM THIS DOCUMENT
REQUIRES APPROVAL OF HERRIMAN CITY.
HERRIMAN CITY CANNOT BE HELD LIABLE
FOR MISUSE OR CHANGES REGARDING THIS
DOCUMENT.

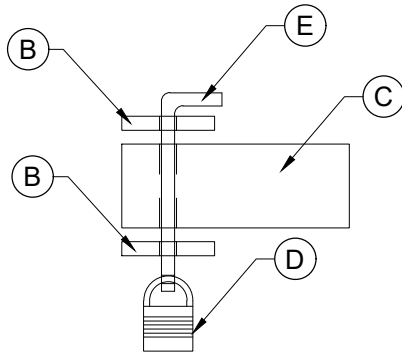


GATE ASSEMBLY FOR TRAIL HEAD (OPTION B)

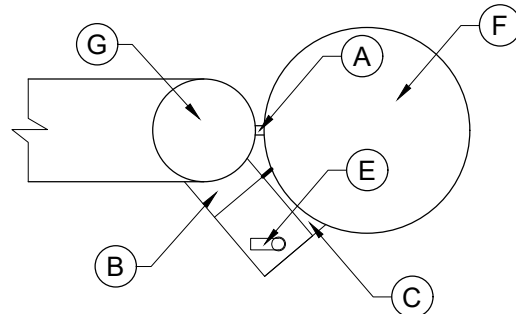
LP-10

\\S:\FILES\PUBLIC\PROJECTS\HERRIMAN\83-17-040 CITY STANDARDS MANUAL UPDATE 2017\TEXT\SUBMITTALS\SECTION 6 (COMPLETE)\2020-11-05\LP-Detail.DWG

1/7/2021 5:00 PM



LOCK DETAIL FRONT VIEW



LOCK DETAIL TOP VIEW

LOCK PARTS LIST			
ITEM	QTY	DESCRIPTION	NOTE
(A)	2	HINGES	2
(B)	2	METAL PLATE	5
(C)	1	2" SQ. TUBE	7
(D)	1	PAD LOCK	1
(E)	1	LOCKING PIN	6
(F)	1	POST	3
(G)	1	GATE	4

NOTES FOR LOCK PARTS:

1. ITS THE DEVELOPERS RESPONSIBILITY TO PROVIDE LOCKS FOR GATES. LOCK MUST BE KEYED TO HERRIMAN CITY STANDARD. LOCK IS TO BE A KRYPTONITE PL1002. LOCK CAN BE PURCHASED AT ARCHITECTURAL BUILDING SUPPLY (801)486-3481.
2. THE HINGES MUST BE HEAVY DUTY HINGES FROM METAL MART.
3. THE METAL PLATE SHOULD BE 2 1/2" X 4" AND 1/4" THICK WITH A 5/8" HOLE FOR THE LOCKING PIN TO GO THROUGH AND MUST BE CUT AND WELDED ON APPROXIMATELY A 30% ANGLE TO THE 3" SCHEDULE 40 PIPE.
4. THE LOCKING PIN IS MADE FROM 3/4" ROUND STALK THAT IS 7 1/2" TALL WITH A 2 1/2" BEND WITH A HOLE AT THE BOTTOM SO THAT THE LOCK CAN GO THROUGH.
5. THE TUBING SHALL BE 2 1/2" SQ TUBING WITH A CAPPED END AND SHALL BE 4" LONG WITH A 5/8" HOLE FOR LOCKING PIN TO GO THROUGH CUT AND WELD ON AT APPROXIMATELY 30% ANGLE TO THE 6" SCHEDULE 40 PIPE.

NO.	REVISION DESCRIPTION	DATE

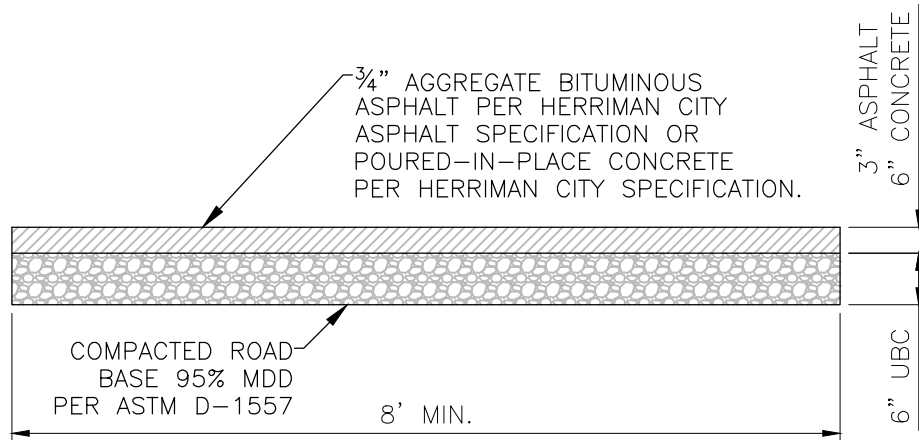
THIS DOCUMENT AND ANY ILLUSTRATIONS HEREON ARE PROVIDED AS STANDARD CONSTRUCTION DETAILS WITHIN HERRIMAN CITY. DEVIATION FROM THIS DOCUMENT REQUIRES APPROVAL OF HERRIMAN CITY. HERRIMAN CITY CANNOT BE HELD LIABLE FOR MISUSE OR CHANGES REGARDING THIS DOCUMENT.



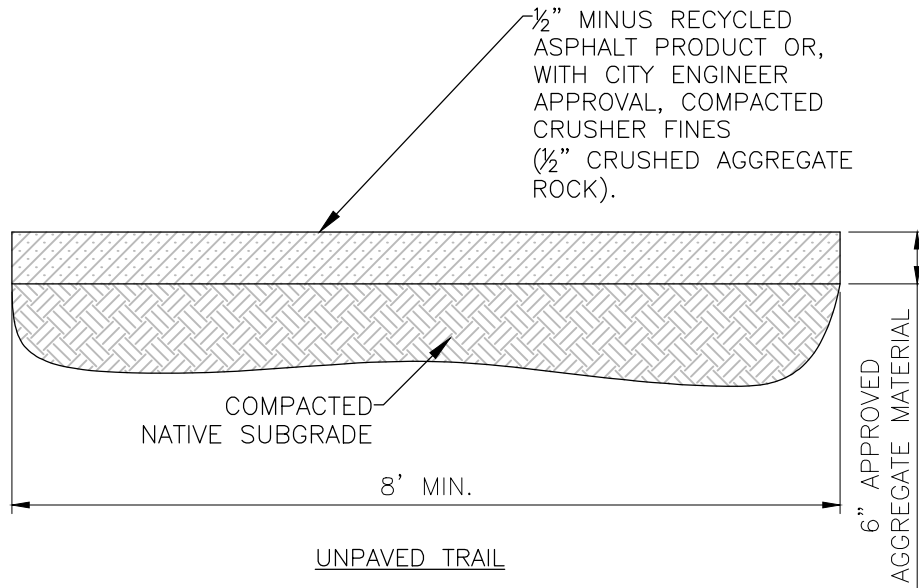
HERRIMAN CITY
ENGINEERING DEPARTMENT
LANDSCAPE
LOCK ASSEMBLY FOR TRAIL HEAD GATE

LP-11

\\SLOFILES\PUBLIC\PROJECTS\HERRIMAN\83-17-040 CITY STANDARDS MANUAL UPDATE 2017\TEXT\SUBMITTALS\SECTION 6 (COMPLETE)\2020-11-05\LP-Detail.DWG



PAVED TRAIL



UNPAVED TRAIL

NOTE:

1. IF TRAIL ABUTS PRIVATE PROPERTY, TRAIL EDGE NEEDS TO BE OFFSET A MINIMUM OF 3 FT. FROM PROPERTY LINE OR FENCE, WHICHEVER IS MORE STRINGENT.
2. IF RECYCLED ASPHALT PRODUCT OR CRUSHER FINES ARE USED, TREAT WITH APPROPRIATE WEED CONTROL PRODUCT AND GROUND STERILANT IF ALLOWED TO BE APPLIED PER THE LABEL RECOMMENDATIONS.

1/7/2021 5:00 PM

NO.	REVISION DESCRIPTION	DATE

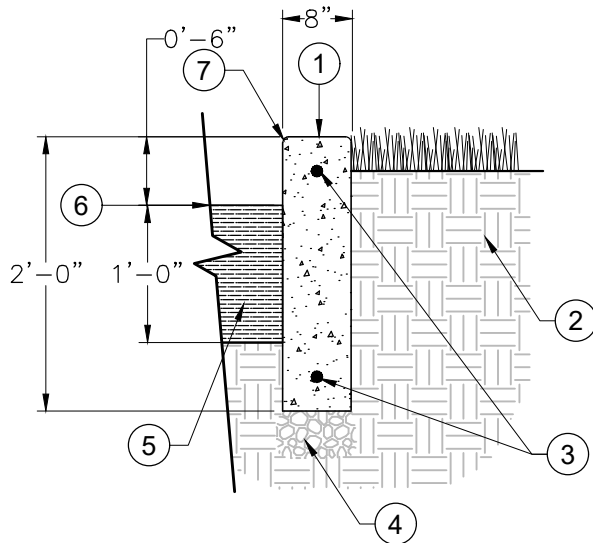
THIS DOCUMENT AND ANY ILLUSTRATIONS HEREON ARE PROVIDED AS STANDARD CONSTRUCTION DETAILS WITHIN HERRIMAN CITY. DEVIATION FROM THIS DOCUMENT REQUIRES APPROVAL OF HERRIMAN CITY. HERRIMAN CITY CANNOT BE HELD LIABLE FOR MISUSE OR CHANGES REGARDING THIS DOCUMENT.



HERRIMAN CITY
ENGINEERING DEPARTMENT
LANDSCAPE
STANDARD TRAIL SECTIONS

LP-12

\\S:\FILES\PUBLIC\PROJECTS\HERRIMAN\83-17-040 CITY STANDARDS MANUAL UPDATE 2017\TEXT\SUBMITTALS\SECTION 6 (COMPLETE)\2020-11-05\LP-LP-DETAILS.DWG



- ① CONCRETE CURB WALL (4000 PSI AT 28 DAYS)
- ② UNDISTURBED OR COMPACTED SUB GRADE TO 95% MDD RELATIVE DENSITY
- ③ (2) #4 REBAR CONT. TOP AND BOTTOM
- ④ 6" UNTREATED BASE COURSE COMPACTED TO 95% MDD PER ASTM D-1557
- ⑤ 12" EWF PLAYGROUND FALL SURFACING
- ⑥ PLAYGROUND FINISHED GRADE
- ⑦ 1/2" RADIUS

1/7/2021 5:00 PM

NO.	REVISION DESCRIPTION	DATE

THIS DOCUMENT AND ANY ILLUSTRATIONS HEREON ARE PROVIDED AS STANDARD CONSTRUCTION DETAILS WITHIN HERRIMAN CITY. DEVIATION FROM THIS DOCUMENT REQUIRES APPROVAL OF HERRIMAN CITY. HERRIMAN CITY CANNOT BE HELD LIABLE FOR MISUSE OR CHANGES REGARDING THIS DOCUMENT.

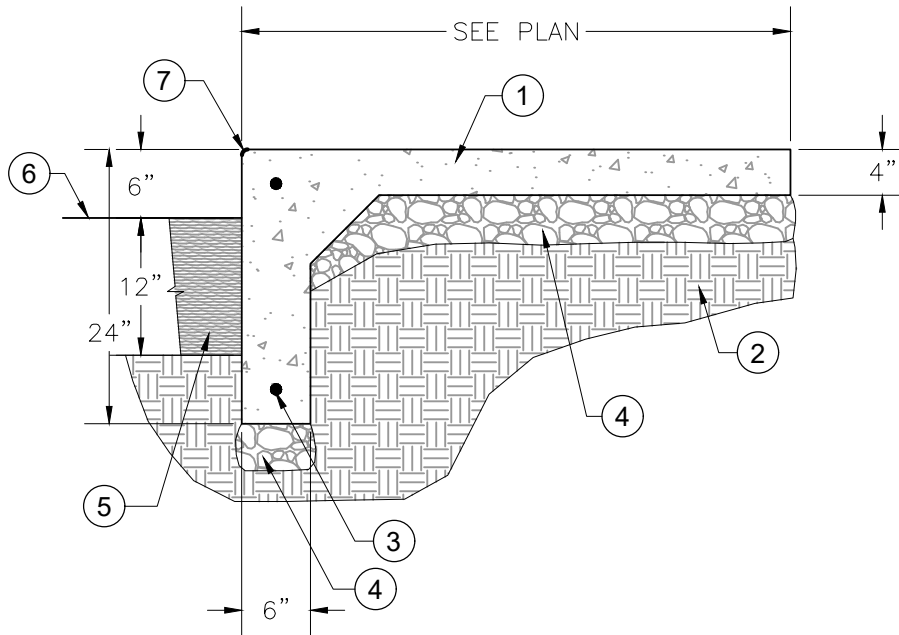


HERRIMAN CITY
ENGINEERING DEPARTMENT
LANDSCAPE
CONCRETE PLAYGROUND CURBING

LP-13

\\SLOFILES\PUBLIC\PROJECTS\HERRIMAN\83-17-040 CITY STANDARDS MANUAL UPDATE 2017\TEXT\SUBMITTALS\SECTION 6 (COMPLETE)\2020-11-05\LP-LP-DETAIL.DWG

1/7/2021 5:00 PM



- ① 4" CONCRETE WALK W/ 8"X24" DEEP EDGE (4000 PSI AT 28 DAYS)
- ② UNDISTURBED OR 95% COMPACTED SUBGRADE
- ③ #4 REBAR CONT.
- ④ 4" UNTREATED BASE COURSE COMPACTED TO 95% MDD PER ASTM D-1557
- ⑤ 12" PLAYGROUND BARK
- ⑥ FINISH GRADE
- ⑦ 1/2" RADIUS

NOTE: CONTROL JOINT SPACING SHALL BE EQUAL TO WALK WIDTH. EXPANSION JOINTS SHALL BE PLACED EVERY $\pm 40'$.

NO.	REVISION DESCRIPTION	DATE

THIS DOCUMENT AND ANY ILLUSTRATIONS HEREON ARE PROVIDED AS STANDARD CONSTRUCTION DETAILS WITHIN HERRIMAN CITY. DEVIATION FROM THIS DOCUMENT REQUIRES APPROVAL OF HERRIMAN CITY. HERRIMAN CITY CANNOT BE HELD LIABLE FOR MISUSE OR CHANGES REGARDING THIS DOCUMENT.



HERRIMAN CITY
ENGINEERING DEPARTMENT
LANDSCAPE
DEEP EDGE PLAYGROUND SIDEWALK

LP-14

HERRIMAN CITY APPROVED TREE LIST - JUNE 2020

(All park strip or parking lot island trees shall be deciduous.)

Botanical Name/Common Name

PLANTING WIDTHS - 3-5 FEET

Acer campestre / Hedge Maple
Acer ginnala / Amur Maple (tree form, all varieties)
Acer tataricum / Tatarian Maple (tree form)
Amelanchier x grandifolia 'Autumn Brilliance' / Apple Serviceberry
Carpinus betulus 'Frans Fontaine' / Frans Fontaine Hornbeam
Cercis canadensis var. / Eastern Redbud (all varieties)
Chitalpa x tashkentensis / Chitalpa (tree form)
Crataegus spp. / Hawthorn (thornless and flowering)
Koelreuteria paniculata / Goldenrain Tree
Maackia amurensis / Amur Maackia
Malus hybrid / Flowering Crabapple (fireblight resistant varieties)
Morus alba / White Mulberry (fruitless)
Morus rubra / Red Mulberry (fruitless)
Ostrya virginiana / Hop Hornbeam
Quercus robur fastigiata / Columnar English Oak
Syringa pekinensis / Chinese Lilac Tree
Syringa reticulata / Japanese Tree Lilac
Ulmus parvifolia / Lace Bark Elm
Zelkova serrata 'City Sprite' / City Sprite Japanese Zelkova

PLANTING WIDTHS - 5-10 FEET

Acer pseudoplatanus / Sycamore Maple
Acer rubrum / Red Maple
Acer truncatum x platanoides / (Norwegian Sunset, Urban Sunset)
Carpinus betulus / European Hornbeam (Fastigiata)
Celtis occidentalis / Common Hackberry
Corylus colurna / Turkish Filbert
Fagus sylvatica / European Beech
Gleditsia triacanthos / Honey Locust (thornless varieties)
Ginkgo biloba / Ginkgo Maidenhair
Gymnocladus dioica / Kentucky Coffeetree (fruitless)
Maclura pomifera 'White Shield' / Osage Orange
Parrotia persica / Persian Ironwood
Quercus bicolor / Swamp Oak

\\S:\FILES\PUBLIC\PROJECTS\HERRIMAN\83-17-040 CITY STANDARDS MANUAL UPDATE 2017\TEXT\SUBMITTALS\SECTION 6 (COMPLETE)\2020-11-05\LP-DRAWING.DWG

1/7/2021 5:00 PM

			<p>THIS DOCUMENT AND ANY ILLUSTRATIONS HEREON ARE PROVIDED AS STANDARD CONSTRUCTION DETAILS WITHIN HERRIMAN CITY. DEVIATION FROM THIS DOCUMENT REQUIRES APPROVAL OF HERRIMAN CITY. HERRIMAN CITY CANNOT BE HELD LIABLE FOR MISUSE OR CHANGES REGARDING THIS DOCUMENT.</p> 	<p>HERRIMAN CITY ENGINEERING DEPARTMENT LANDSCAPE</p>		<p>LP-15</p>
				<p>APPROVED TREE LIST - 1 OF 3</p>		
NO.	REVISION DESCRIPTION	DATE				

HERRIMAN CITY APPROVED TREE LIST - JUNE 2020 (cont.)

(All park strip or parking lot island trees shall be deciduous.)

Botanical Name/Common Name

PLANTING WIDTHS - 3-5 FEET

Quercus ellipsoidalis and cultivar 'Majestic Skies' / Northern Pin Oak

Quercus macrocarpa / Bur Oak

Quercus robur / English Oak

Quercus rubra / Northern Red Oak

Tilia cordata / Littleleaf Linden (several varieties)

Tilia euchlora / Crimean Linden

Tilia tomentosa / Silver Linden (several varieties)

FOR ALL PLANTING WIDTHS GREATER THAN 10 FEET (i.e. open space)

Acer miyabei 'State Street' / State Street Maple

Acer negundo 'Sensation' / Sensation Box Elder

Aesculus glabra / Buckeye

Aesculus x carnea / Horsechestnut (red)

Albizia julibrissin / Mimosa

Catalpa speciosa / Northern Catalpa

Celtis reticulata / Nettleleaf Hackberry

Cladrastis kentuckea / Yellowwood

Cornus mas / Cornelian Cherry Dogwood

Fagus sylvatica / European Beech

Liriodendron tulipifera / Tuliptree

Quercus alba / White Oak

Quercus cerris / Turkey Oak

Quercus muehlenbergii / Chinkapin Oak

Quercus shumardii / Shumard Oak

Tilia americana / American Linden

Ulmus americana / American Elm (I.E. 'Colonial Spirit', 'Prairie Expedition' - survivors of Dutch Elm Disease)

Ulmus hybrids / (i.e. 'Frontier' and 'Accolade')

Ulmus propinqua 'Emerald Sunshine' / Emerald Sunshine Elm

CONIFERS: BEST IN GROUPINGS AT ENTRANCES TO DEVELOPMENTS, OPEN SPACES AND IN NON-TRADITIONAL PARKING STRIPS AT LEAST 20 FEET WIDE

Cedrus atlantica 'Glaucia' / Blue Atlas Cedar

Cedrus deodara 'Karl Fuchs', 'Kashmir', 'Shalimar' / Deodar Cedar

Chamaecyparis nootkatensis 'Pendula' / Weeping Alaska Cedar

1/7/2021 5:00 PM \\S:\FILES\PUBLIC\PROJECTS\HERRIMAN\83-17-040 CITY STANDARDS MANUAL UPDATE 2017\TEXT\SUBMITTALS\SECTION 6 (COMPLETE)\2020-11-05\LP-Detail.DWG

			<p>THIS DOCUMENT AND ANY ILLUSTRATIONS HEREON ARE PROVIDED AS STANDARD CONSTRUCTION DETAILS WITHIN HERRIMAN CITY. DEVIATION FROM THIS DOCUMENT REQUIRES APPROVAL OF HERRIMAN CITY. HERRIMAN CITY CANNOT BE HELD LIABLE FOR MISUSE OR CHANGES REGARDING THIS DOCUMENT.</p> 	<p>HERRIMAN CITY ENGINEERING DEPARTMENT LANDSCAPE</p>		<p>LP-16</p>
				<p>APPROVED TREE LIST - 2 OF 3</p>		
NO.	REVISION DESCRIPTION	DATE				

HERRIMAN CITY APPROVED TREE LIST - JUNE 2020 (cont.)

(All park strip or parking lot island trees shall be deciduous.)

Botanical Name/Common Name

Calocedrus decurrens / Incense Cedar
Juniperus chinensis cultivars / Chinese Juniper
Juniperus scopulorum / Rocky Mountain Juniper
Pinus nigra (cultivars for columnar and dwarf) / Austrian Pine
Pinus leucodermis 'Heldreichii' / Bosnian Pine
Pinus sylvestris (cultivars for columnar and dwarf) / Scotch Pine
Pinus strobus / Eastern White Pine
Pinus flexilis 'Vanderwolf's Pyramid' / Vanderwolf Pine
Juniperus virginiana / Eastern Red Cedar
Pinus edulis / Pinyon pine
Sequoiadendron giganteum / Giant Sequoia
Taxodium distichum / Bald cypress
Thuja orientalis / Arborvitae (won't grow on secondary water)

Prohibited Street Trees

Acer saccharinum / Silver Maple
Ailanthus altissima / Tree of Heaven
Betula species / Birch species
Eleagnus angustifolia / Russian Olive
Fraxinus species / Ash species
Populus species / Cottonwood species
Prunus cerasifera / Cherry Plum
Prunus padus / May Day Tree
Pyrus calleryana / Flowering Pear
Robinia species / Locust species
Salix species Willow species
Sophora japonica / Japanese Pagoda Tree
Ulmus pumila / Siberian Elm
Ziziphus jujube / Chinese Date
All varieties of trees bearing fruits or nuts
All conifer trees
Thorned trees

1/7/2021 5:00 PM \\S:\FILES\PUBLIC\PROJECTS\HERRIMAN\83-17-040 CITY STANDARDS MANUAL UPDATE 2017\TEXT\SUBMITTALS\SECTION 6 (COMPLETE)\2020-11-05\LP-Detail.DWG

																																																																																																																																																																																																																																																																																																																																																																																																																																																																																																																																																																																																																																																																																																																																																																																																																																																																																																																																																																																																																																																																																																																																																																																																																																																																																																																																																																																																																									</
--	--	--	--	--	--	--	--	--	--	--	--	--	--	--	--	--	--	--	--	--	--	--	--	--	--	--	--	--	--	--	--	--	--	--	--	--	--	--	--	--	--	--	--	--	--	--	--	--	--	--	--	--	--	--	--	--	--	--	--	--	--	--	--	--	--	--	--	--	--	--	--	--	--	--	--	--	--	--	--	--	--	--	--	--	--	--	--	--	--	--	--	--	--	--	--	--	--	--	--	--	--	--	--	--	--	--	--	--	--	--	--	--	--	--	--	--	--	--	--	--	--	--	--	--	--	--	--	--	--	--	--	--	--	--	--	--	--	--	--	--	--	--	--	--	--	--	--	--	--	--	--	--	--	--	--	--	--	--	--	--	--	--	--	--	--	--	--	--	--	--	--	--	--	--	--	--	--	--	--	--	--	--	--	--	--	--	--	--	--	--	--	--	--	--	--	--	--	--	--	--	--	--	--	--	--	--	--	--	--	--	--	--	--	--	--	--	--	--	--	--	--	--	--	--	--	--	--	--	--	--	--	--	--	--	--	--	--	--	--	--	--	--	--	--	--	--	--	--	--	--	--	--	--	--	--	--	--	--	--	--	--	--	--	--	--	--	--	--	--	--	--	--	--	--	--	--	--	--	--	--	--	--	--	--	--	--	--	--	--	--	--	--	--	--	--	--	--	--	--	--	--	--	--	--	--	--	--	--	--	--	--	--	--	--	--	--	--	--	--	--	--	--	--	--	--	--	--	--	--	--	--	--	--	--	--	--	--	--	--	--	--	--	--	--	--	--	--	--	--	--	--	--	--	--	--	--	--	--	--	--	--	--	--	--	--	--	--	--	--	--	--	--	--	--	--	--	--	--	--	--	--	--	--	--	--	--	--	--	--	--	--	--	--	--	--	--	--	--	--	--	--	--	--	--	--	--	--	--	--	--	--	--	--	--	--	--	--	--	--	--	--	--	--	--	--	--	--	--	--	--	--	--	--	--	--	--	--	--	--	--	--	--	--	--	--	--	--	--	--	--	--	--	--	--	--	--	--	--	--	--	--	--	--	--	--	--	--	--	--	--	--	--	--	--	--	--	--	--	--	--	--	--	--	--	--	--	--	--	--	--	--	--	--	--	--	--	--	--	--	--	--	--	--	--	--	--	--	--	--	--	--	--	--	--	--	--	--	--	--	--	--	--	--	--	--	--	--	--	--	--	--	--	--	--	--	--	--	--	--	--	--	--	--	--	--	--	--	--	--	--	--	--	--	--	--	--	--	--	--	--	--	--	--	--	--	--	--	--	--	--	--	--	--	--	--	--	--	--	--	--	--	--	--	--	--	--	--	--	--	--	--	--	--	--	--	--	--	--	--	--	--	--	--	--	--	--	--	--	--	--	--	--	--	--	--	--	--	--	--	--	--	--	--	--	--	--	--	--	--	--	--	--	--	--	--	--	--	--	--	--	--	--	--	--	--	--	--	--	--	--	--	--	--	--	--	--	--	--	--	--	--	--	--	--	--	--	--	--	--	--	--	--	--	--	--	--	--	--	--	--	--	--	--	--	--	--	--	--	--	--	--	--	--	--	--	--	--	--	--	--	--	--	--	--	--	--	--	--	--	--	--	--	--	--	--	--	--	--	--	--	--	--	--	--	--	--	--	--	--	--	--	--	--	--	--	--	--	--	--	--	--	--	--	--	--	--	--	--	--	--	--	--	--	--	--	--	--	--	--	--	--	--	--	--	--	--	--	--	--	--	--	--	--	--	--	--	--	--	--	--	--	--	--	--	--	--	--	--	--	--	--	--	--	--	--	--	--	--	--	--	--	--	--	--	--	--	--	--	--	--	--	--	--	--	--	--	--	--	--	--	--	--	--	--	--	--	--	--	--	--	--	--	--	--	--	--	--	--	--	--	--	--	--	--	--	--	--	--	--	--	--	--	--	--	--	--	--	--	--	--	--	--	--	--	--	--	--	--	--	--	--	--	--	--	--	--	--	--	--	--	--	--	--	--	--	--	--	--	--	--	--	--	--	--	--	--	--	--	--	--	--	--	--	--	--	--	--	--	--	--	--	--	--	--	--	--	--	--	--	--	--	--	--	--	--	--	--	--	--	--	--	--	--	--	--	--	--	--	--	--	--	--	--	--	--	--	--	--	--	--	--	--	--	--	--	--	--	--	--	--	--	--	--	--	--	--	--	--	--	--	--	--	--	--	--	--	--	--	--	--	--	--	--	--	--	--	--	--	--	--	--	--	--	--	--	--	--	--	--	--	--	--	--	--	--	--	--	--	--	--	--	--	--	--	--	--	--	--	--	--	--	--	--	--	--	--	--	--	--	--	--	--	--	--	--	--	--	--	--	--	--	--	--	--	--	--	--	--	--	--	--	--	--	--	--	--	--	--	--	--	--	--	--	--	--	--	--	--	--	--	--	--	--	--	--	--	--	--	--	--	--	--	--	--	--	--	--	--	--	--	--	--	--	--	--	--	--	--	--	--	--	--	--	--	--	--	--	--	--	--	--	--	--	--	--	--	--	--	--	--	--	--	--	--	--	--	--	--	--	--	--	--	--	--	--	--	--	--	--	--	--	--	--	--	--	--	--	--	--	--	--	--	--	--	--	--	--	--	--	--	--	--	--	--	--	--	--	--	--	--	--	--	--	--	--	--	--	--	--	--	--	--	--	--	--	--	--	--	--	--	--	--	--	--	--	--	--	--	--	--	--	--	--	--	--	--	--	--	--	--	--	--	--	--	--	--	--	--	--	--	--	--	--	--	--	--	--	--	--	--	--	--	--	--	--	--	--	--	--	--	--	--	--	--	--	--	--	--	--	--	--	--	--	--	--	--	--	--	--	--	--	--	--	--	--	--	--	--	--	--	--	--	--	--	--	--	--	--	--	--	--	--	--	--	--	--	--	--	--	--	--	--	--	--	--	--	--	--	--	--	--	--	--	--	--	--	--	--	--	--	--	--	--	--	--	--	--	--	--	--	--	--	--	--	--	--	--	--	--	--	--	--	--	--	--	--	--	--	--	--	--	--	--	--	--	--	--	--	--	--	--	--	--	--	--	--	--	--	--	--	--	--	--	--	--	--	--	--	----

HERRIMAN CITY APPROVED UPLAND SEE MIX - SEPT. 2020

Botanical Name/Common Name	LBS PLS/ ACRE	% BY WEIGHT	% BY SEED
----------------------------	------------------	----------------	--------------

GRASSES

<i>Achnatherum hymenoides</i> Indian Ricegrass / Indian Ricegrass	4.00	14.6%	10.0%
<i>Elytrigia repens</i> x <i>Pseudoroegneria spicata</i> 'Newhy' / Newhy Hybrid Wheatgrass	3.50	12.7%	8.7%
<i>Elymus lanceolatus</i> ssp. <i>lanceolatus</i> / Thickspike Wheatgrass	3.50	12.7%	9.6%
<i>Elymus trachycaulus</i> ssp. <i>Trachycaulus</i> 'Pryor' / Pryor Slender Wheatgrass	4.00	14.6%	11.3%
<i>Festuca ovina</i> 'Covar' / Covar Sheep Fescue	0.60	2.2%	7.2%
<i>Poa secunda</i> ssp. <i>Sandbergii</i> / Sandberg Bluegrass	0.40	1.5%	6.6%

FORBS/SHTUBS/COVER CROP

<i>Artemisia fridiga</i> / Fringed Sagebrush	0.03	0.1%	2.4%
<i>Chrysothamnus viscidiflorus</i> / Douglas Rabbitbrush	0.15	0.5%	6.6%
<i>Oenothera pallida</i> / White Evening Primrose	0.30	1.1%	2.7%
<i>Triticum aestivum</i> x <i>Secale cereale</i> / QuickGuard Sterile Triticale	6.00	21.8%	1.4%

*ROCKY MOUNTAIN WILDFLOWER MIX

<i>Linum perenne</i> / Blue Flax	1.40	5.1%	7.3%
<i>Sanguisorba minor</i> / Small Burnet	0.40	5.1%	7.3%
<i>Rudbeckia hirta</i> / Black-eyed Susan	0.11	0.4%	3.3%
<i>Eschscholzia californica</i> / California Poppy	0.40	1.5%	2.3%
<i>Cheiranthus allionii</i> / Wallflower	0.29	1.1%	1.5%
<i>Gaillardia pulchella</i> / Firewheel	0.29	1.1%	0.8%
<i>Lupinus sericeus</i> / Silky Lupine	0.40	1.5%	0.1%
<i>Penstemon strictus</i> / Rocky Mountain Penstemon	0.23	0.8%	2.4%
<i>Coreopsis lanceolata</i> / Lance-leaved Coreopsis	0.34	1.2%	1.3%
<i>Ratibida columnifera</i> / Prairie Coneflower	0.11	0.4%	2.4%
<i>Ratibida columnifera</i> forma <i>pulcherrima</i> / Mexican Hat	0.11	0.4%	2.4%
<i>Papaver rhoeas</i> / Flanders Poppy	0.09	0.3%	5.1%
<i>Penstemon palmeri</i> / Palmer Penstemon	0.23	0.8%	2.2%
<i>Coreopsis tinctoria</i> / Plains Coreopsis	0.09	0.3%	2.2%
<i>Linanthus grandifloras</i> / Mountain Phlox	0.13	0.1%	0.5%
<i>Lupinus argenteus</i> ssp. <i>Rubricaulis</i> / Mountain Lupine	0.17	0.6%	3.0%
<i>Geranium viscosissimum</i> / Wild Geranium	0.08	0.3%	0.1%
<i>Gaillardia aristata</i> / Blanket Flower	0.23	0.8%	0.5%

*Rocky Mountain Wildflower Mix is a proprietary seed mix provided by Granite Seed and Erosion Control Company. They can provide the entire seed mix as described above. Their contact information is shown below:

Granite Seed, 1697 West 2100 North, Lehi, Utah 84043

\\S:\FILES\PUBLIC\PROJECTS\HERRIMAN\83-17-040 CITY STANDARDS MANUAL UPDATE 2017\TEXT\SUBMITTALS\SECTION 6 (COMPLETE)\2020-11-05\LP-DETAILS.DWG

1/7/2021 5:01 PM

NO.	REVISION DESCRIPTION	DATE		HERRIMAN CITY ENGINEERING DEPARTMENT LANDSCAPE APPROVED SEED MIX	LP-18