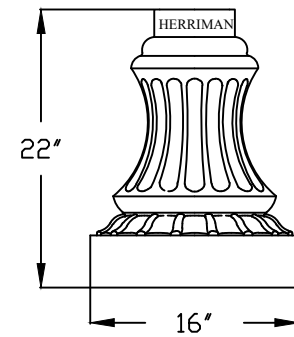
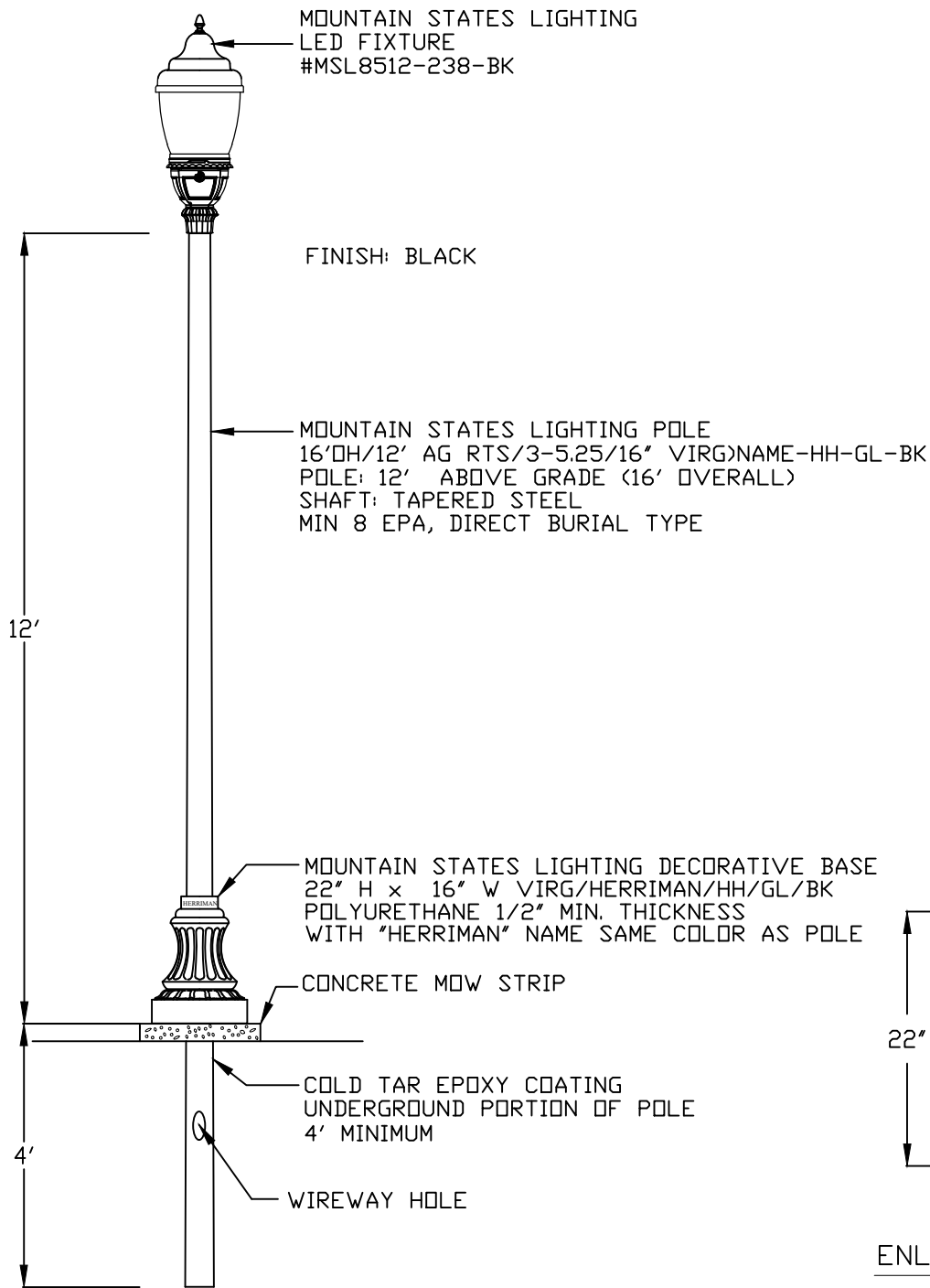


1/13/2021 5:05 AM G:\ENGINEERING\PROJECTS\06 MUNICIPAL\2016-17\1617-03 DEV STDS AND REQ UPDATE\5-UPDATED DELIVERABLE\CAD\SECTION 6 STANDARD DRAWINGS\SL\SL-01 LED RES.DWG



ENLARGED BASE DETAIL

NO.	REVISION DESCRIPTION	DATE

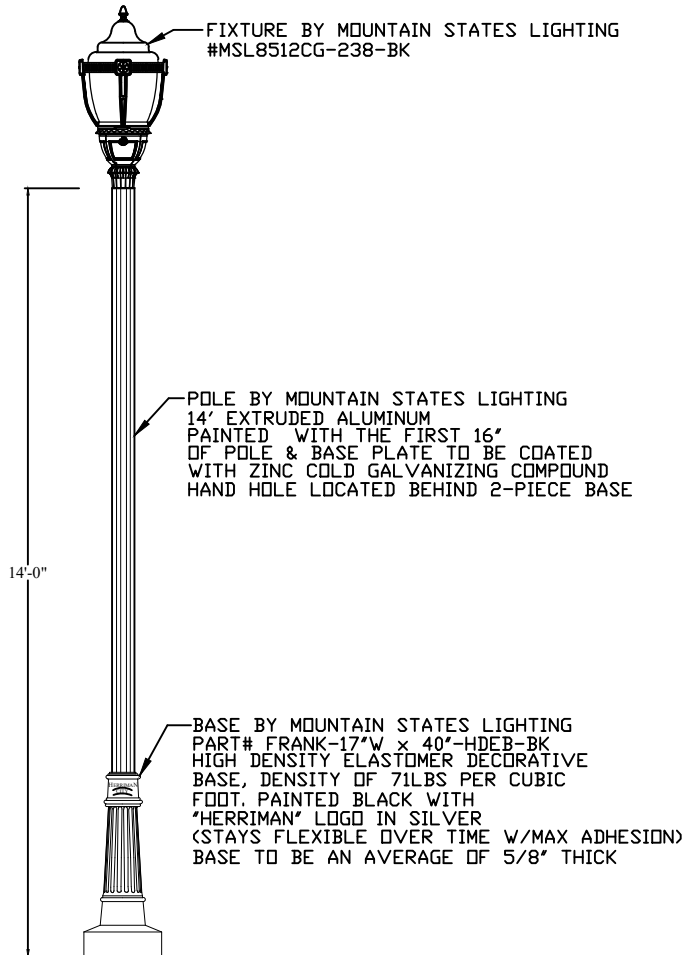
THIS DOCUMENT AND ANY ILLUSTRATIONS HEREON ARE PROVIDED AS STANDARD CONSTRUCTION DETAILS WITHIN HERRIMAN CITY. DEVIATION FROM THIS DOCUMENT REQUIRES APPROVAL OF HERRIMAN CITY. HERRIMAN CITY CANNOT BE HELD LIABLE FOR MISUSE OR CHANGES REGARDING THIS DOCUMENT.



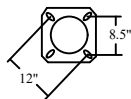
HERRIMAN CITY
ENGINEERING DEPARTMENT
STREET LIGHTING
RESIDENTIAL STREET LIGHT

SL-01

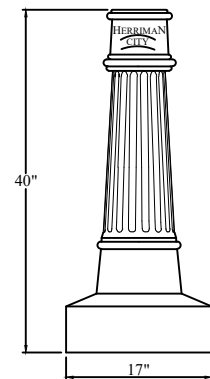
1/13/2021 5:07 AM G:\ENGINEERING\PROJECTS\06 MUNICIPAL\2016-17\1617-03 DEV STDS AND REQ UPDATE\5-UPDATED DELIVERABLE\CAD\SECTION 6 STANDARD DRAWINGS\SL-01A TOWN CENTER RES.DWG



FINISH;
BLACK



ANCHOR BASE DETAIL
12" BOLT CIRCLE
ANCHOR BOLTS: 3/4" x 18"



DECORATIVE BASE

ENLARGED DETAIL

NO.	REVISION DESCRIPTION	DATE

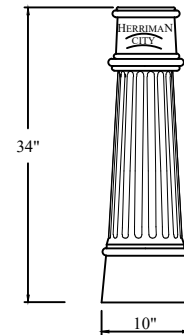
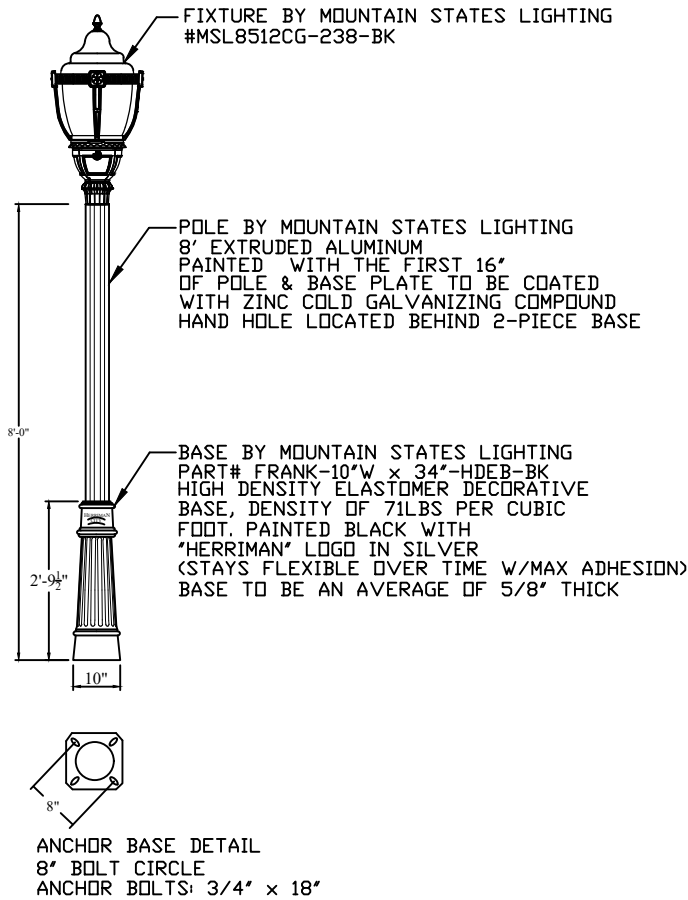
THIS DOCUMENT AND ANY ILLUSTRATIONS
HEREON ARE PROVIDED AS STANDARD
CONSTRUCTION DETAILS WITHIN HERRIMAN
CITY. DEVIATION FROM THIS DOCUMENT
REQUIRES APPROVAL OF HERRIMAN CITY.
HERRIMAN CITY CANNOT BE HELD LIABLE
FOR MISUSE OR CHANGES REGARDING THIS
DOCUMENT.



HERRIMAN CITY
ENGINEERING DEPARTMENT
STREET LIGHTING
TOWN CENTER POST TOP STREET LIGHT

SL-01A

1/13/2021 5:08 AM G:\ENGINEERING\PROJECTS\06 MUNICIPAL\2016-17\1617-03 DEV STDS AND REQ UPDATE\5-UPDATED DELIVERABLE\CAD\SECTION 6 STANDARD DRAWINGS\SL-01B BRIDGE LIGHTING.DWG



DECORATIVE BASE
ENLARGED DETAIL

NO.	REVISION DESCRIPTION	DATE

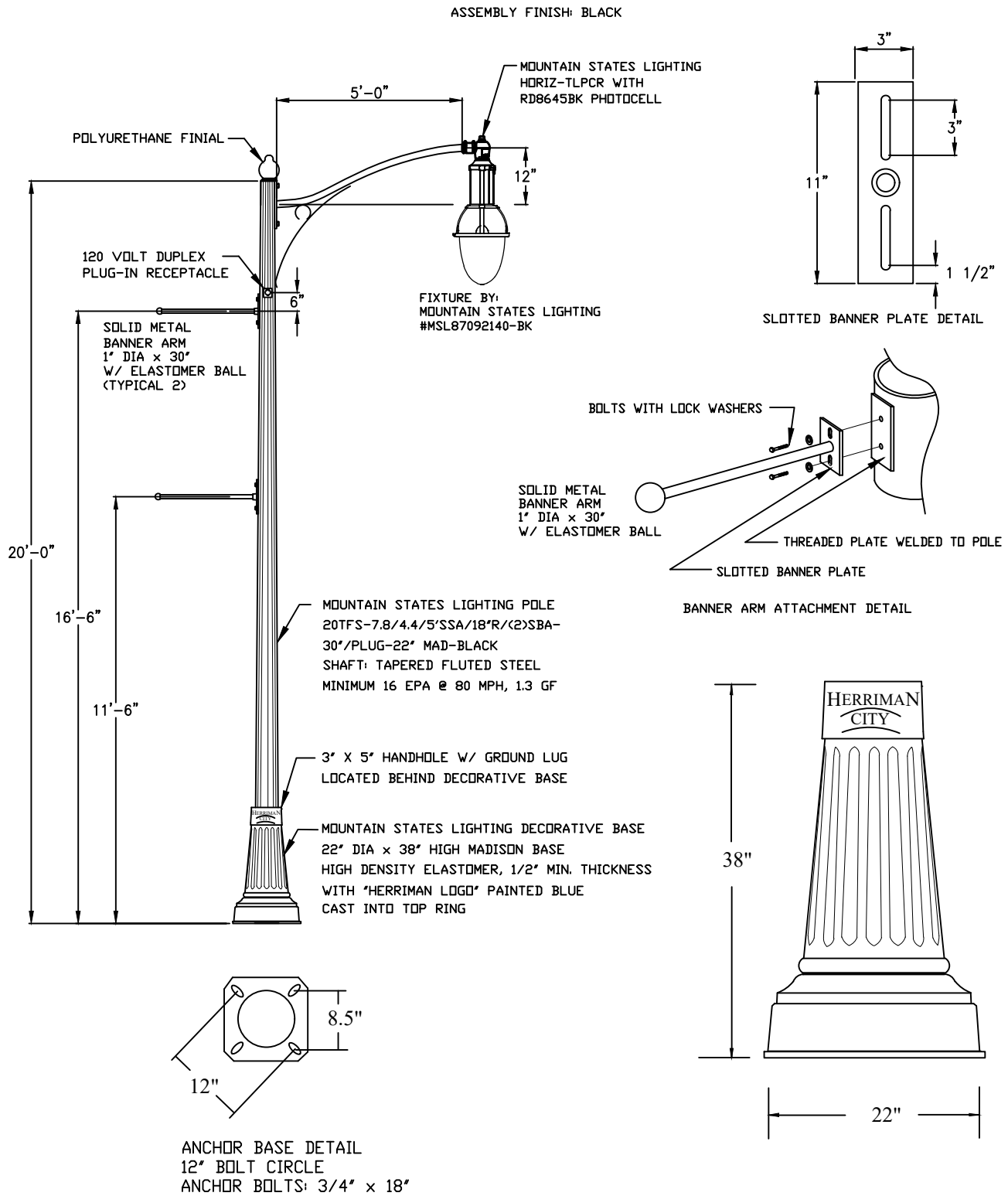
THIS DOCUMENT AND ANY ILLUSTRATIONS HEREON ARE PROVIDED AS STANDARD CONSTRUCTION DETAILS WITHIN HERRIMAN CITY. DEVIATION FROM THIS DOCUMENT REQUIRES APPROVAL OF HERRIMAN CITY. HERRIMAN CITY CANNOT BE HELD LIABLE FOR MISUSE OR CHANGES REGARDING THIS DOCUMENT.



HERRIMAN CITY
ENGINEERING DEPARTMENT
STREET LIGHTING
POST TOP BRIDGE STREET LIGHT

SL-01B

1/20/20 G:\ENGINEERING\PROJECTS\06 MUNICIPAL\2016-17\1617-03 DEV STDs AND REQ UPDATE\5-UPDATED DELIVERABLE\CAD\SECTION 6 STANDARD DRAWINGS\SL-02 LED COMMERCIAL.DWG



THIS DOCUMENT AND ANY ILLUSTRATIONS
HEREON ARE PROVIDED AS STANDARD
CONSTRUCTION DETAILS WITHIN HERRIMAN
CITY. DEVIATION FROM THIS DOCUMENT
REQUIRES APPROVAL OF HERRIMAN CITY.
HERRIMAN CITY CANNOT BE HELD LIABLE
FOR MISUSE OR CHANGES REGARDING THIS
DOCUMENT.



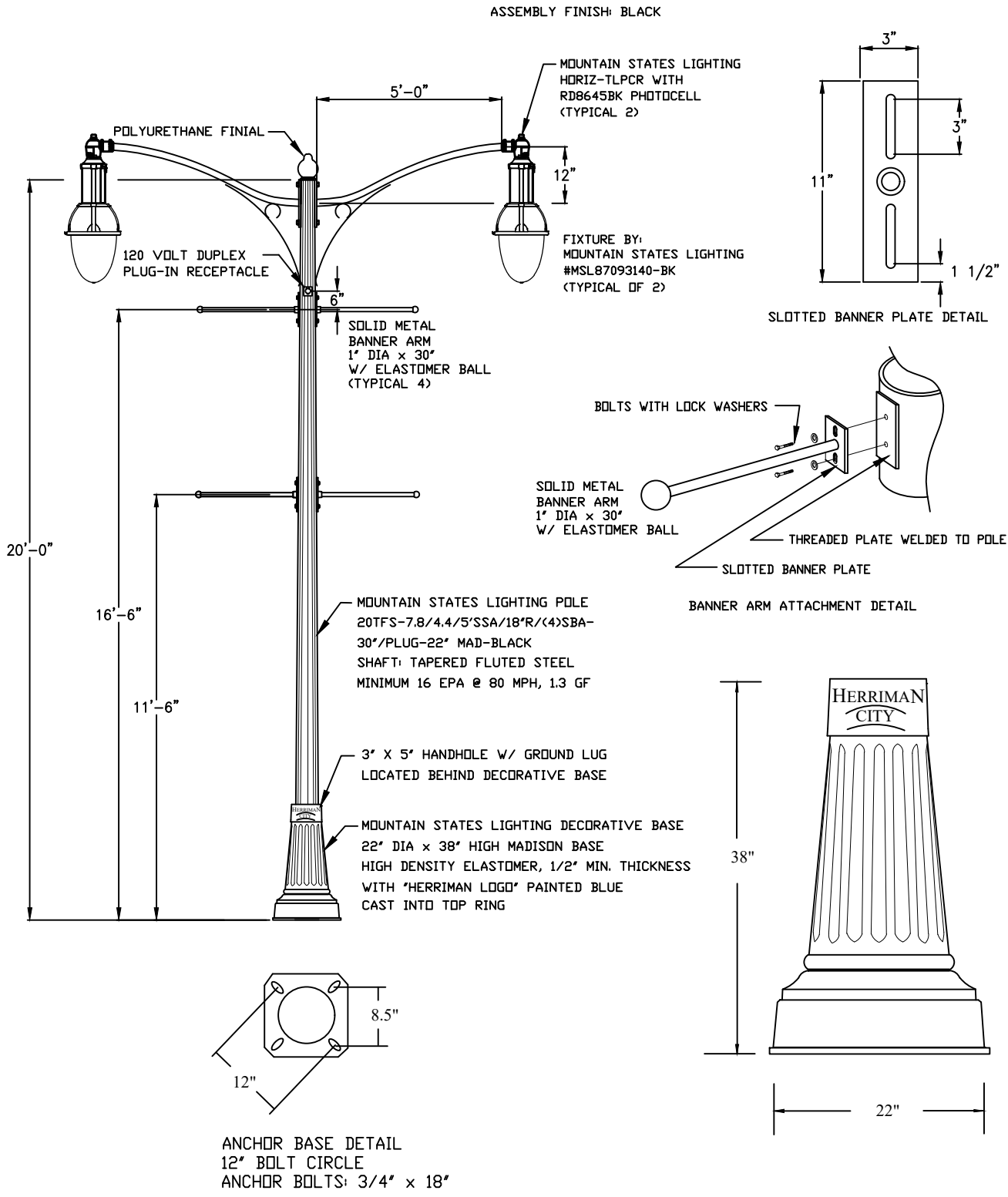
HERRIMAN CITY
ENGINEERING DEPARTMENT
STREET LIGHTING

SINGLE COMMERCIAL STREET LIGHT STANDARD

SL-02

NO.	REVISION DESCRIPTION	DATE

1/13/2021 5:10 AM C:\ENGINEERING\PROJECTS\06 MUNICIPAL\2016-17\1617-03 DEV STDS. AND REQ. UPDATE\5-UPDATED DELIVERABLE\CAD\SECTION 6 STANDARD DRAWINGS\SL\SL-02A LED COMMERCIAL.DWG



HERRIMAN CITY
ENGINEERING DEPARTMENT
STREET LIGHTING

SL-02A

DOUBLE COMMERCIAL STREET LIGHT STANDARD

NO.	REVISION DESCRIPTION	DATE

THIS DOCUMENT AND ANY ILLUSTRATIONS HEREON ARE PROVIDED AS STANDARD CONSTRUCTION DETAILS WITHIN HERRIMAN CITY. DEVIATION FROM THIS DOCUMENT REQUIRES APPROVAL OF HERRIMAN CITY. HERRIMAN CITY CANNOT BE HELD LIABLE FOR MISUSE OR CHANGES REGARDING THIS DOCUMENT.

1/13/2021 5:12 AM C:\ENGINEERING\PROJECTS\06 MUNICIPAL\2016-17\1617-03 DEV STDS AND REQ UPDATE\5-UPDATED DELIVERABLE\CAD\SECTION 6 STANDARD DRAWINGS\SL-03 CITY PARKING.DWG

ASSEMBLY FINISH: BLACK

MOUNTAIN STATES LIGHTING
HORIZ-TLPCR WITH
RD8645BK PHOTOCELL

FIXTURE BY:
MOUNTAIN STATES LIGHTING

120 VOLT DUPLEX PLUG-IN RECEPTACLE

SOLID METAL
BANNER ARM
1" DIA x 30"
W/ ELASTOMER BALL
(TYPICAL 2)

5'-0"

25'-0"

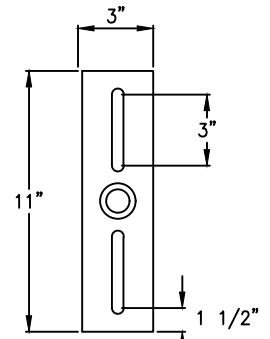
15'-0"

POLE BY MOUNTAIN STATES LIGHTING
P#25TFS-7/4.5-(2)ARM/MES/48"L-22MAD(NAME)BK
25' TAPERED FLUTED STEEL
PAINTED BLACK WITH FIRST 16'
OF POLE AND BASE PLATE COATED
WITH INDUSTRIAL ZINC COATING
MIN EPA OF 12 IN 80 MPH ZONE (1.3 GUST FACTOR)

BASE BY MOUNTAIN STATES LIGHTING
HIGH DENSITY ELASTOMER DECORATIVE
BASE, DENSITY OF 71 LBS PER CUBIC FOOT.
PAINTED BLACK WITH A MODIFIED
URETHANE COATING.
ELASTOMER, 1/2" MIN. THICKNESS.
"CITY LOGO" CAST INTO
BASE AND PAINTED SILVER.
HANDHOLE LOCATED BEHIND
TWO PIECE BASE.

38"

22"



SLOTTED BANNER PLATE DETAIL

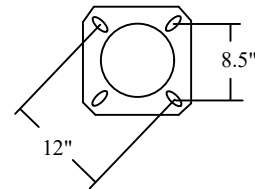
BOLTS WITH LOCK WASHERS

SOLID METAL
BANNER ARM
1" DIA x 30"
W/ ELASTOMER BALL

THREADED PLATE WELDED TO POLE

SLOTTED BANNER PLATE

BANNER ARM ATTACHMENT DETAIL



ANCHOR BASE DETAIL
12" BOLT CIRCLE
ANCHOR BOLTS: 1" x 36"

NO.	REVISION DESCRIPTION	DATE

THIS DOCUMENT AND ANY ILLUSTRATIONS
HEREON ARE PROVIDED AS STANDARD
CONSTRUCTION DETAILS WITHIN HERRIMAN
CITY. DEVIATION FROM THIS DOCUMENT
REQUIRES APPROVAL OF HERRIMAN CITY.
HERRIMAN CITY CANNOT BE HELD LIABLE
FOR MISUSE OR CHANGES REGARDING THIS
DOCUMENT.

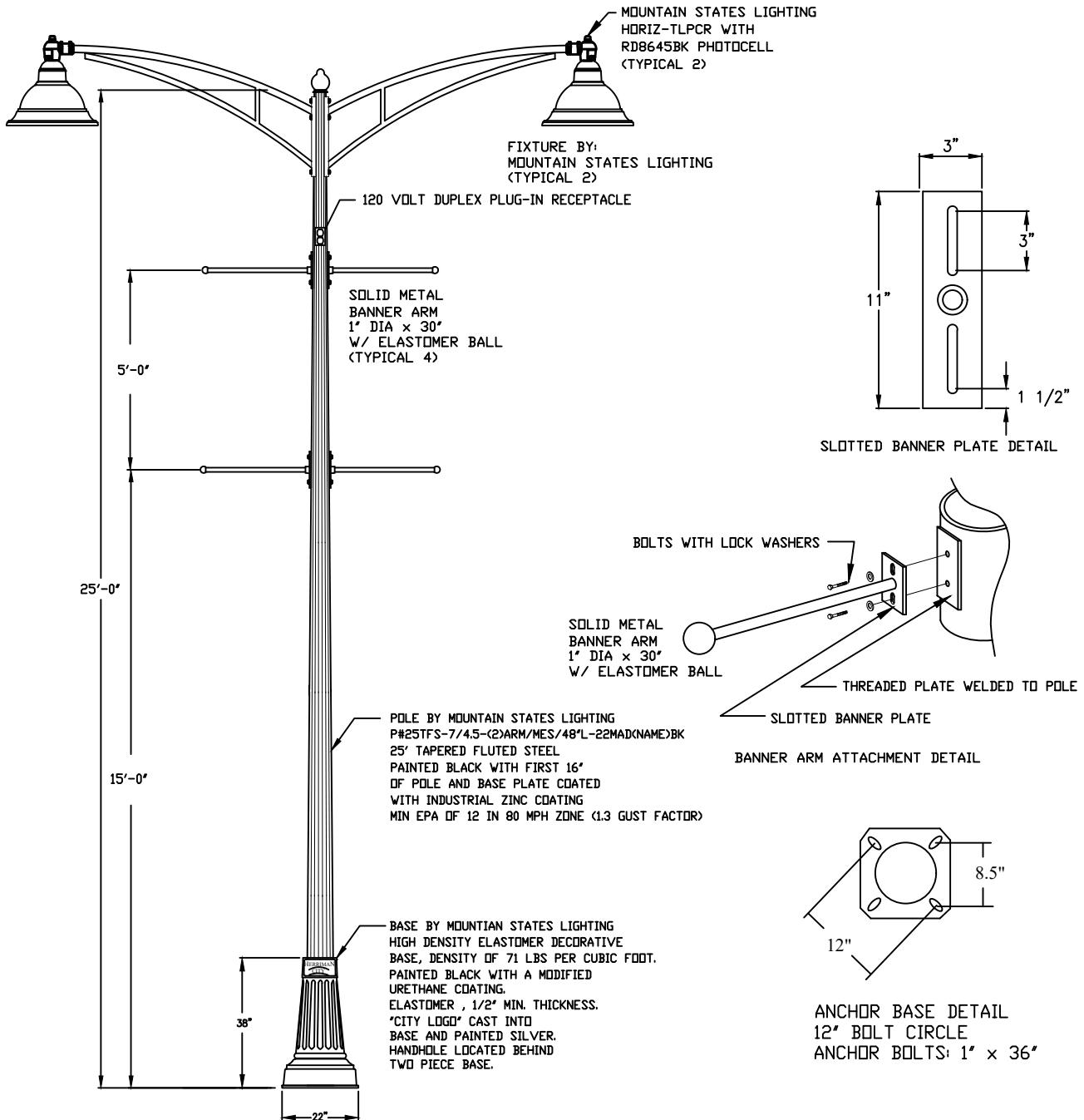


HERRIMAN CITY
ENGINEERING DEPARTMENT
STREET LIGHTING

25' SINGLE ARM CITY PARKING LOT POLE

SL-03

ASSEMBLY FINISH: BLACK



1/20/20 G:\ENGINEERING\PROJECTS\06 MUNICIPAL\2016-17\1617-03 DEV STDS AND REQ UPDATE\5-UPDATED DELIVERABLE\CAD\SECTION 6 STANDARD DRAWINGS\SL\SL-03A CITY PARKING.DWG

NO.	REVISION DESCRIPTION	DATE

THIS DOCUMENT AND ANY ILLUSTRATIONS HEREON ARE PROVIDED AS STANDARD CONSTRUCTION DETAILS WITHIN HERRIMAN CITY. DEVIATION FROM THIS DOCUMENT REQUIRES APPROVAL OF HERRIMAN CITY. HERRIMAN CITY CANNOT BE HELD LIABLE FOR MISUSE OR CHANGES REGARDING THIS DOCUMENT.

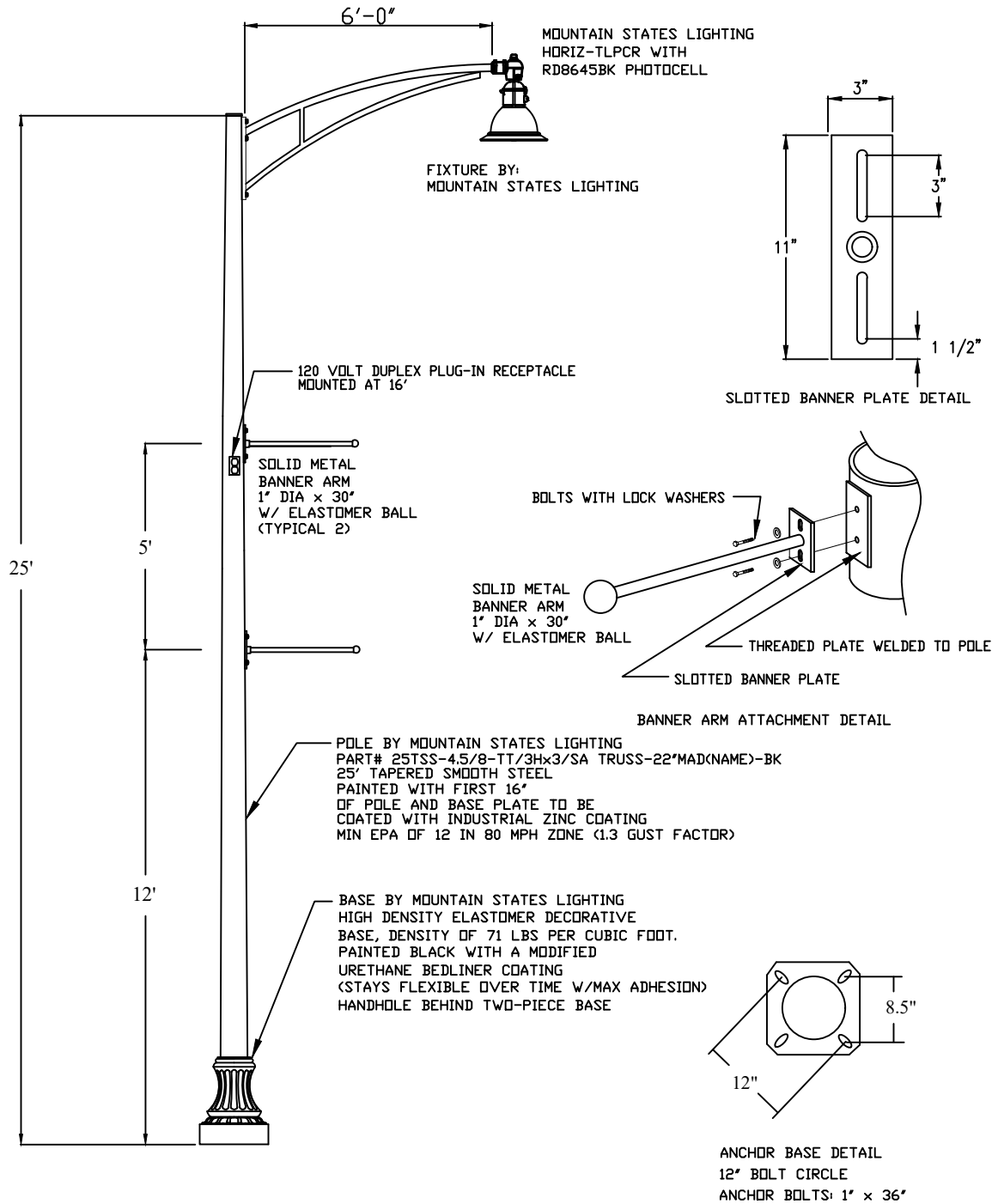


HERRIMAN CITY
ENGINEERING DEPARTMENT
STREET LIGHTING
25' DOUBLE ARM CITY PARKING LOT POLE

SL-03A

1/13/2021 5:20 AM G:\ENGINEERING\PROJECTS\06 MUNICIPAL\2016-17\1617-03 DEV STDS AND REQ UPDATE\5-UPDATED DELIVERABLE\CAD\SECTION 6 STANDARD DRAWINGS\SL\SL-04 RETAIL PARKING.DWG

FINISH: BLACK



THIS DOCUMENT AND ANY ILLUSTRATIONS
HEREON ARE PROVIDED AS STANDARD
CONSTRUCTION DETAILS WITHIN HERRIMAN
CITY. DEVIATION FROM THIS DOCUMENT
REQUIRES APPROVAL OF HERRIMAN CITY.
HERRIMAN CITY CANNOT BE HELD LIABLE
FOR MISUSE OR CHANGES REGARDING THIS
DOCUMENT.



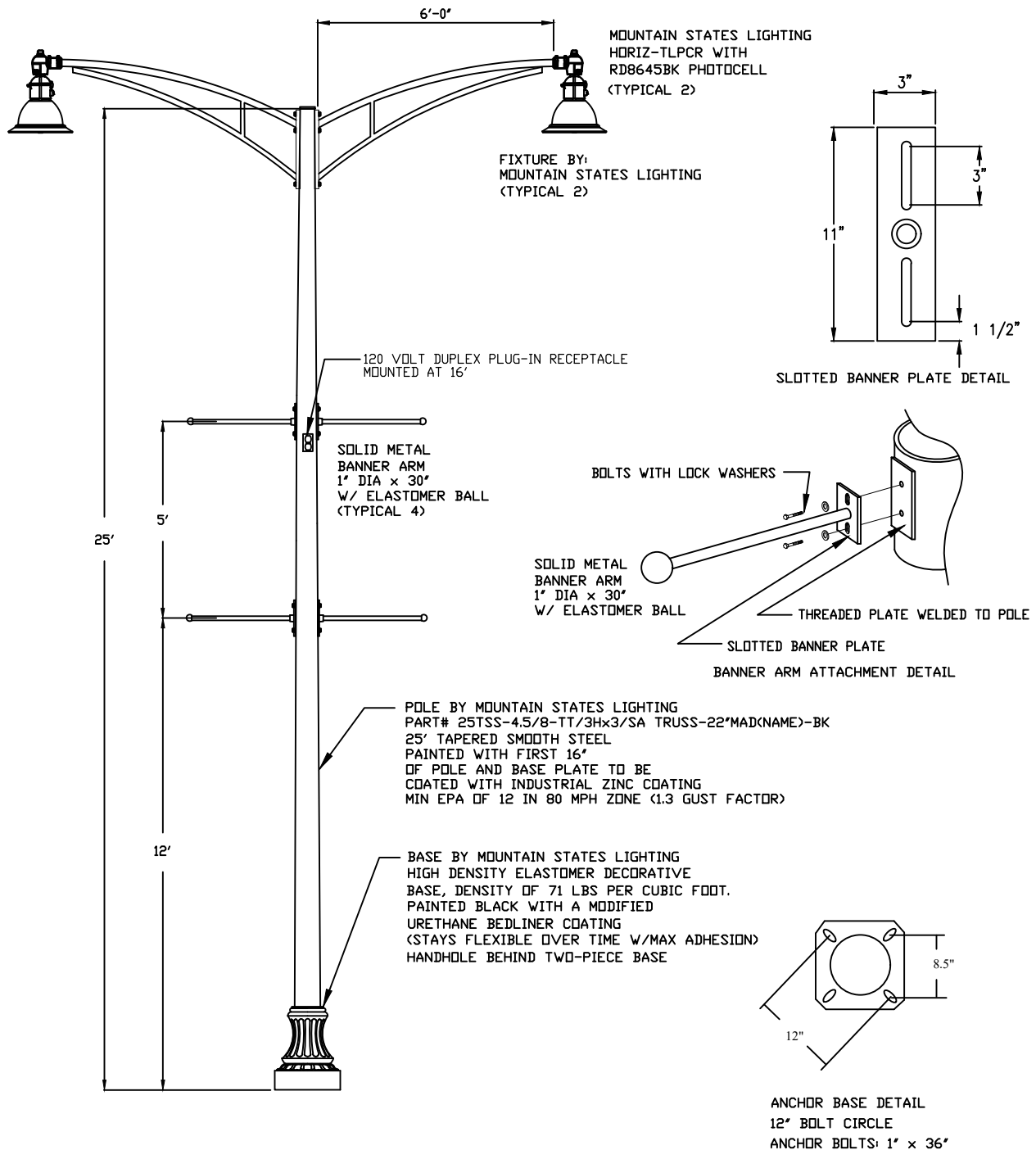
HERRIMAN CITY
ENGINEERING DEPARTMENT
STREET LIGHTING
25' SINGLE ARM RETAIL POLE

SL-04

NO.	REVISION DESCRIPTION	DATE

1/13/2021 5:21 AM C:\ENGINEERING\PROJECTS\06 MUNICIPAL\2016-17\1617-03 DEV STDS AND REQ UPDATE\5-UPDATED DELIVERABLE\CAD\SECTION 6 STANDARD DRAWINGS\SL\SL-04A RETAIL PARKING.DWG

FINISH: BLACK



THIS DOCUMENT AND ANY ILLUSTRATIONS HEREON ARE PROVIDED AS STANDARD CONSTRUCTION DETAILS WITHIN HERRIMAN CITY. DEVIATION FROM THIS DOCUMENT REQUIRES APPROVAL OF HERRIMAN CITY. HERRIMAN CITY CANNOT BE HELD LIABLE FOR MISUSE OR CHANGES REGARDING THIS DOCUMENT.



HERRIMAN CITY
ENGINEERING DEPARTMENT
STREET LIGHTING
25' DOUBLE ARM RETAIL POLE

SL-04A

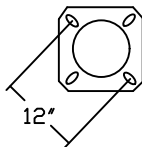
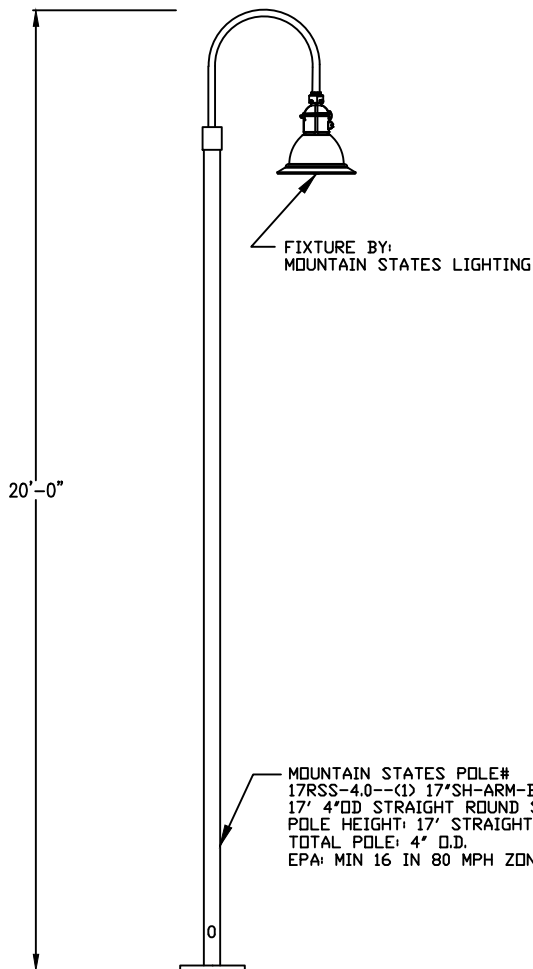
NO.	REVISION DESCRIPTION	DATE

1/13/2021 5:22 AM G:\ENGINEERING\PROJECTS\06 MUNICIPAL\2016-17\1617-03 DEV STDS AND REQ UPDATE\5-UPDATED DELIVERABLE\CAD\SECTION 6 STANDARD DRAWINGS\SL\SL-05 SHEPARD HOOK.DWG

FINISH:
BLACK

OPTICAL SYSTEM: FLAT ARRAY, FLAT LENS
IES LTG. CLASS.: TYPE III
WATTAGE: 100W (7030 SERIES)
SOLID STATE LIGHTING

SERIES: 2127030
CCT: 4000K
LINE VOLTAGE: 120-277 V
PAINT: TEXTURED BLACK
OPTIONS: MSL- LEVELING DEVICE
OPTIONS: QUICK DISCONNECT



ANCHOR BASE DETAIL
12" BOLT CIRCLE
ANCHOR BOLTS: 3/4" x 18"

THIS DOCUMENT AND ANY ILLUSTRATIONS
HEREON ARE PROVIDED AS STANDARD
CONSTRUCTION DETAILS WITHIN HERRIMAN
CITY. DEVIATION FROM THIS DOCUMENT
REQUIRES APPROVAL OF HERRIMAN CITY.
HERRIMAN CITY CANNOT BE HELD LIABLE
FOR MISUSE OR CHANGES REGARDING THIS
DOCUMENT.

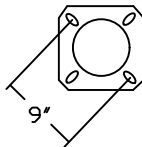
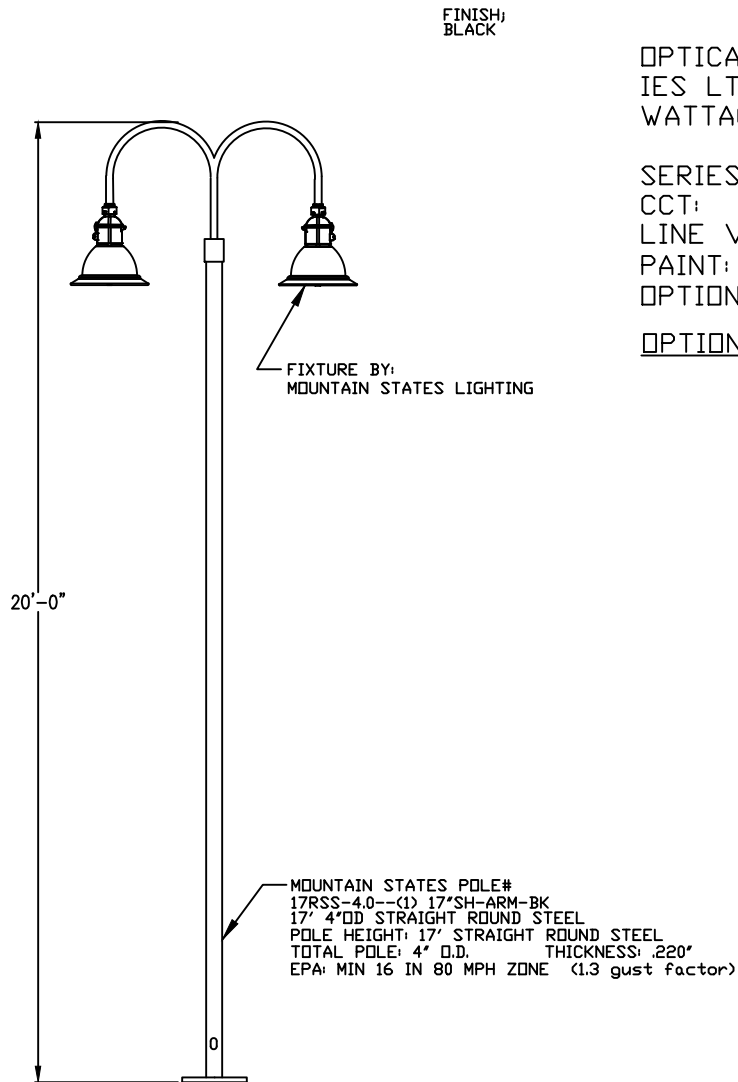


HERRIMAN CITY
ENGINEERING DEPARTMENT
STREET LIGHTING
RETAIL SINGLE SHEPARD HOOK

SL-05

NO.	REVISION DESCRIPTION	DATE

1/13/2021 5:24 AM G:\ENGINEERING\PROJECTS\06 MUNICIPAL\2016-17\1617-03 DEV STDS AND REQ UPDATE\5-UPDATED DELIVERABLE\CAD\SECTION 6 STANDARD DRAWINGS\SL\SL-05A SHEPARD HOOK.DWG



ANCHOR BASE DETAIL
MATCH EXISTING 9" BOLT CIRCLE
ANCHOR BOLTS: 3/4" x 18"

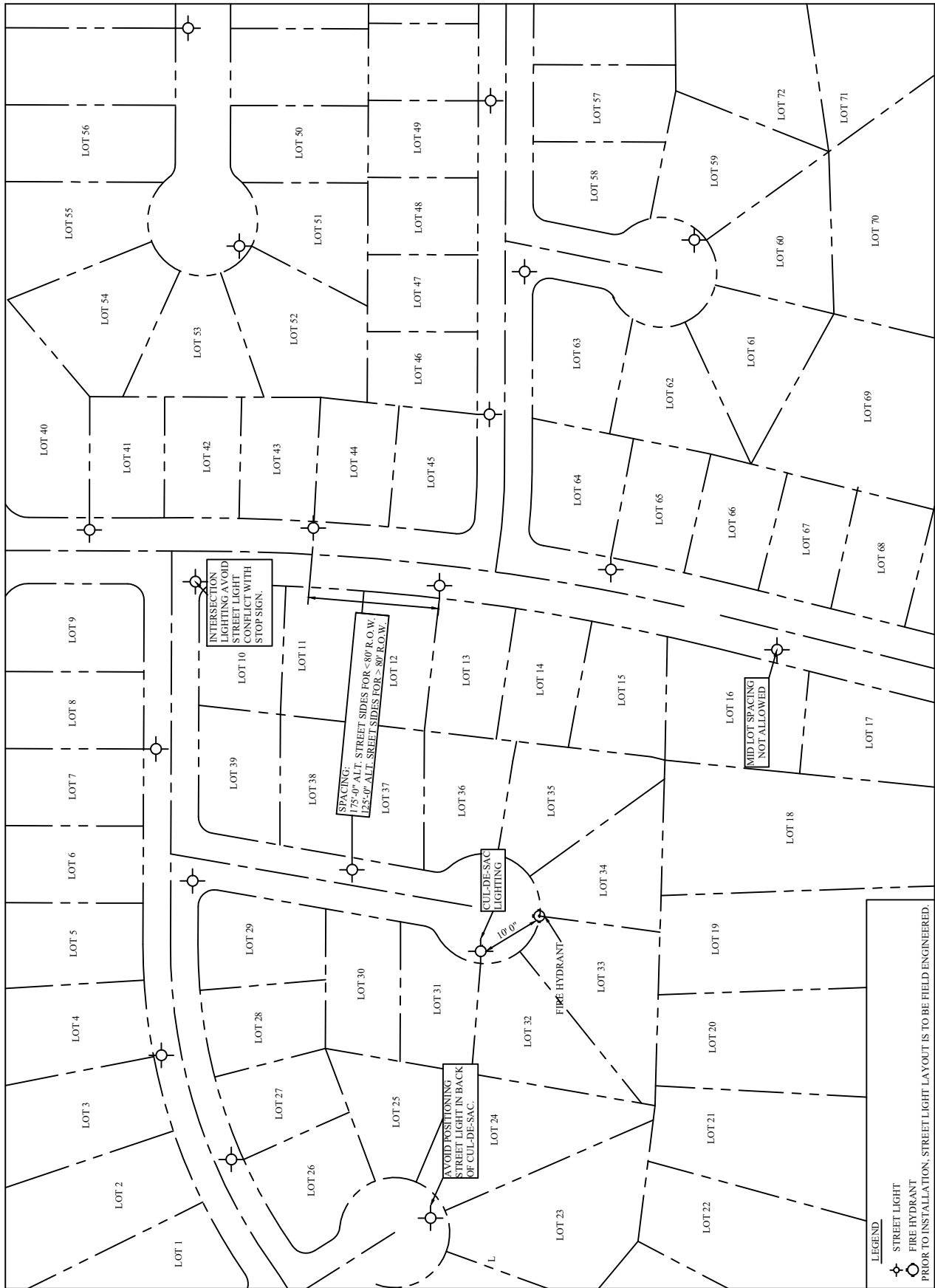
THIS DOCUMENT AND ANY ILLUSTRATIONS
HEREON ARE PROVIDED AS STANDARD
CONSTRUCTION DETAILS WITHIN HERRIMAN
CITY. DEVIATION FROM THIS DOCUMENT
REQUIRES APPROVAL OF HERRIMAN CITY.
HERRIMAN CITY CANNOT BE HELD LIABLE
FOR MISUSE OR CHANGES REGARDING THIS
DOCUMENT.



HERRIMAN CITY
ENGINEERING DEPARTMENT
STREET LIGHTING
RETAIL DOUBLE SHEPARD HOOK

SL-05A

NO.	REVISION DESCRIPTION	DATE



NO.	REVISION DESCRIPTION	DATE

THIS DOCUMENT AND ANY ILLUSTRATIONS HEREON ARE PROVIDED AS STANDARD CONSTRUCTION DETAILS WITHIN HERRIMAN CITY. DEVIATION FROM THIS DOCUMENT REQUIRES APPROVAL OF HERRIMAN CITY. HERRIMAN CITY CANNOT BE HELD LIABLE FOR MISUSE OR CHANGES REGARDING THIS DOCUMENT.



HERRIMAN CITY
ENGINEERING DEPARTMENT
STREET LIGHTING
TYPICAL STREET LIGHTING LAYOUT

SL-06

RESIDENTIAL

UTILITY CO. PEDESTAL OR TRANSFORMER

DETAIL-RESIDENTIAL BRANCH CIRCUIT TRENCH

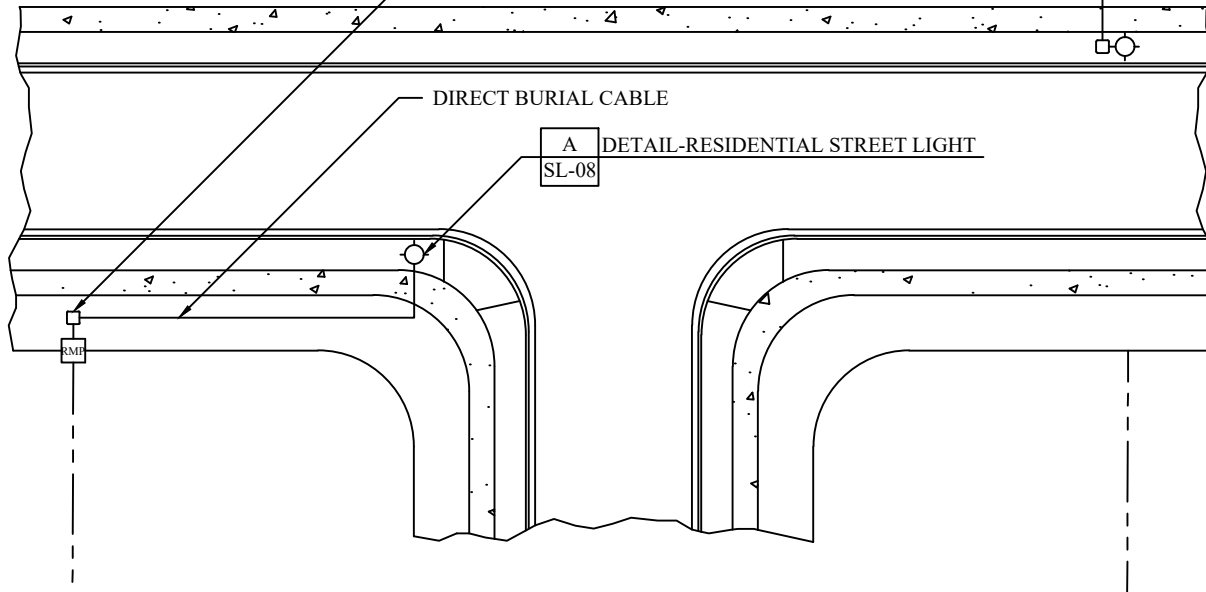
A
SL-07

B
SL-08
DETAIL-JUNCTION BOX WITH FUSE

10 FT. MAX. FROM POWER PEDESTAL

DIRECT BURIAL CABLE

A
SL-08
DETAIL-RESIDENTIAL STREET LIGHT



SEE NOTE 2 FOR PAVED TRENCH REPAIR

MAGNETIC MARKER TAPE

BACKFILL

24"
12"

12" MIN.

WATER LINE

DIRECT BURIAL CABLE

A
DETAIL-RESIDENTIAL BRANCH CIRCUIT TRENCH
SCALE: NO SCALE

NOTES:

1. ALL RESIDENTIAL STREET LIGHT CABLE SHALL BE DIRECT BURIAL CABLE.
2. TRENCH REPAIR IN A ROAD WAY OR PAVED TRAIL IS TO BE REPAIRED AS PER HERRIMAN CITY EXCAVATION PERMIT SPECIFICATION.
3. ALL LANDSCAPE AND IRRIGATION IS TO BE REPAIRED TO ORIGINAL CONDITION OR BETTER.
4. IN ROCKY SOIL MAY NEED FILL OR SAND.



HERRIMAN CITY
ENGINEERING DEPARTMENT
STREET LIGHTING

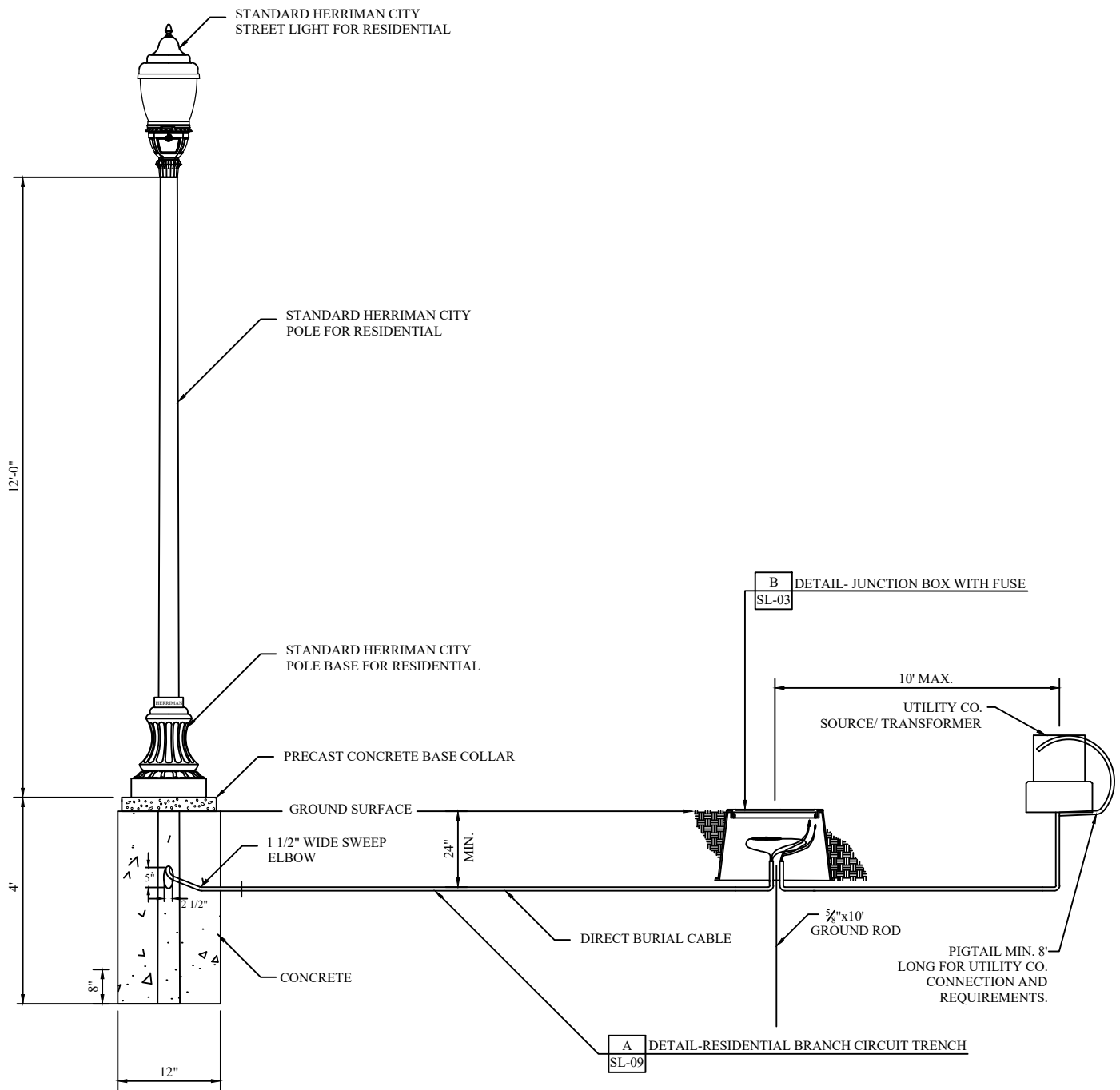
RESIDENTIAL STREET LIGHT POWER LAYOUT

SL-07

NO.	REVISION DESCRIPTION	DATE

THIS DOCUMENT AND ANY ILLUSTRATIONS HEREON ARE PROVIDED AS STANDARD CONSTRUCTION DETAILS WITHIN HERRIMAN CITY. DEVIATION FROM THIS DOCUMENT REQUIRES APPROVAL OF HERRIMAN CITY. HERRIMAN CITY CANNOT BE HELD LIABLE FOR MISUSE OR CHANGES REGARDING THIS DOCUMENT.

1/13/2021 5:35 AM G:\ENGINEERING\PROJECTS\06 MUNICIPAL\2016-17\1617-03 DEV STDS AND REQ UPDATE\5-UPDATED DELIVERABLE\CAD\SECTION 6 STANDARD DRAWINGS\SL\SL-08 RESI STREET LIGHT UNDERGROUND.DWG



A **DETAIL-RESIDENTIAL STREET LIGHT**
SCALE: NO SCALE

SEE NOTES ON SL-08A

NO.	REVISION DESCRIPTION	DATE

THIS DOCUMENT AND ANY ILLUSTRATIONS HEREON ARE PROVIDED AS STANDARD CONSTRUCTION DETAILS WITHIN HERRIMAN CITY. DEVIATION FROM THIS DOCUMENT REQUIRES APPROVAL OF HERRIMAN CITY. HERRIMAN CITY CANNOT BE HELD LIABLE FOR MISUSE OR CHANGES REGARDING THIS DOCUMENT.

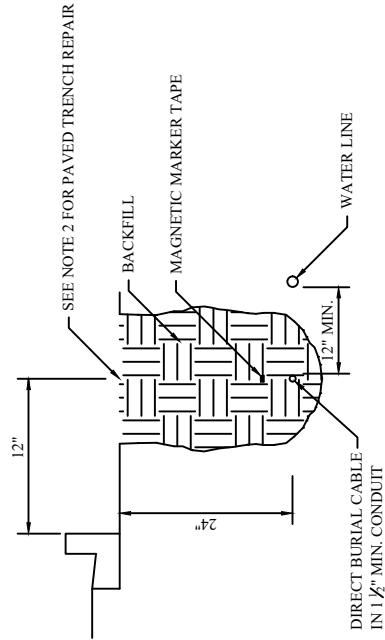
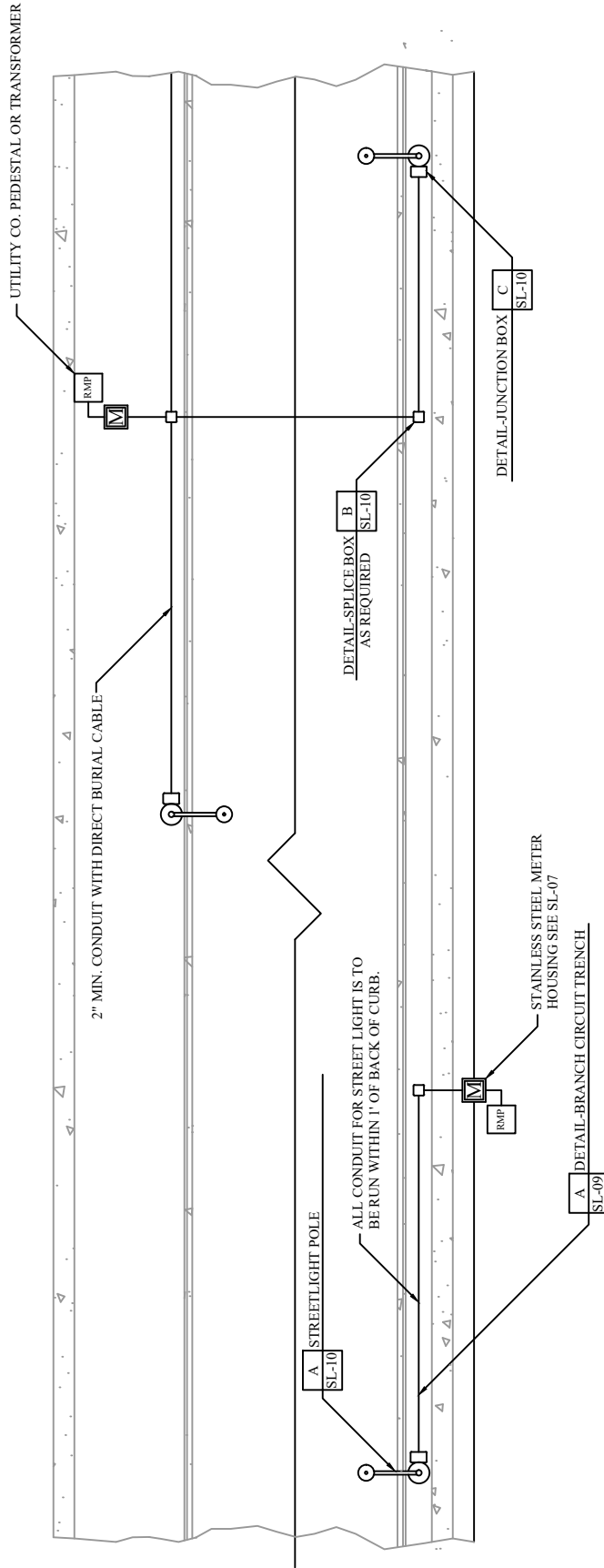


HERRIMAN CITY
ENGINEERING DEPARTMENT
STREET LIGHT

RESIDENTIAL STREET LIGHT UNDERGROUND

SL-08

ARTERIAL



NOTES:

1. ALL COMMERCIAL STREET LIGHT CABLE SHALL BE DIRECT BURIAL CABLE IN CONDUIT 2" MINIMUM SCHEDULE 40 GRAY NON-CONDUCTIVE PVC.
2. IF TRENCH REPAIR IS IN A ROADWAY OR PAVED TRAIL, THE REPAIR WILL BE AS PER HERRIMAN CITY EXCAVATION PERMIT SPECIFICATION.
3. INGROUND BOXES LOCATED WITHIN 20' OF APPROACHES AND INTERSECTIONS SHALL BE CARSON H SERIES H1324.

A DETAIL-COMMERCIAL BRANCH CIRCUIT TRENCH
SCALE: NO SCALE

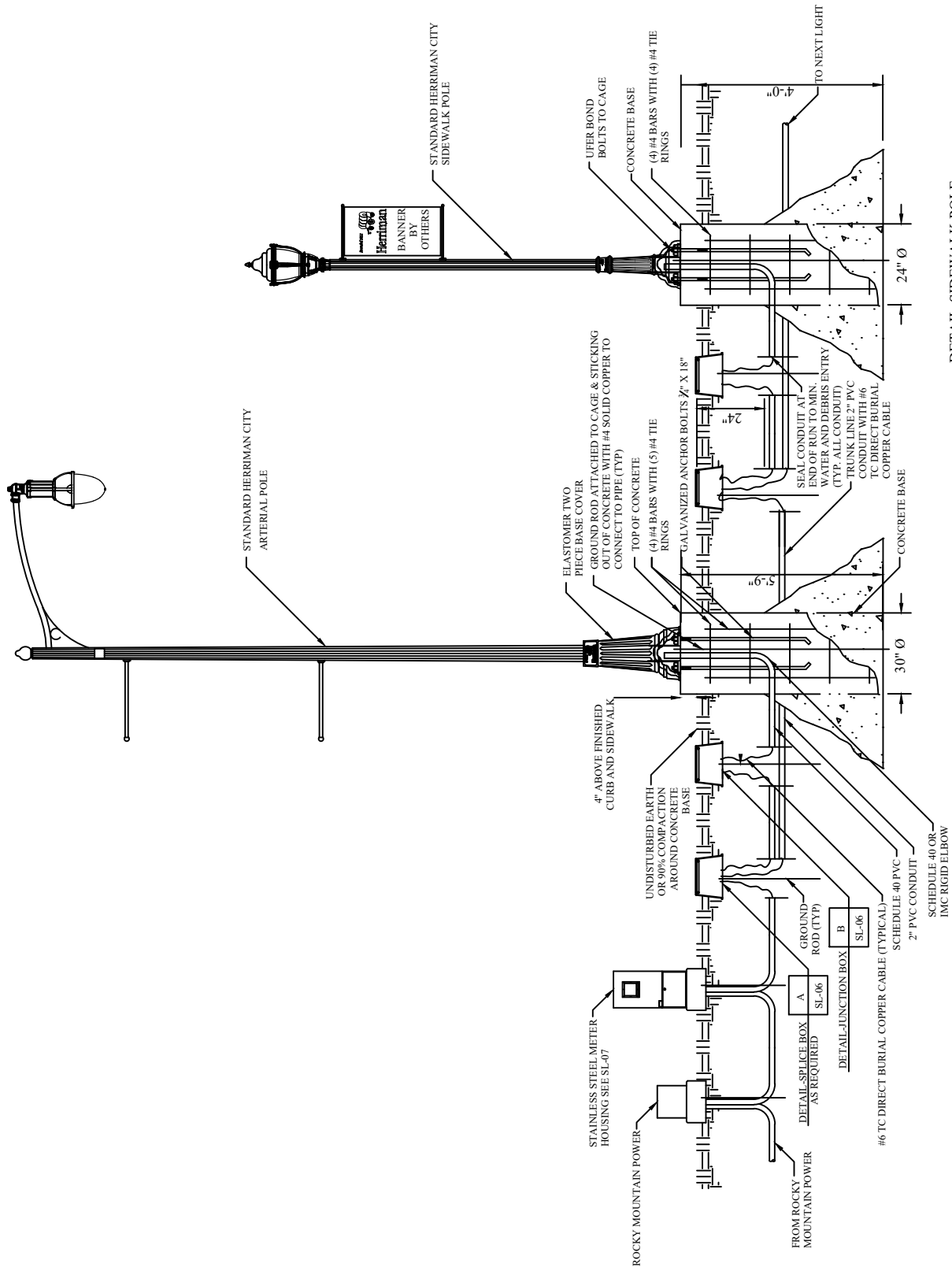
THIS DOCUMENT AND ANY ILLUSTRATIONS HEREON ARE PROVIDED AS STANDARD CONSTRUCTION DETAILS WITHIN HERRIMAN CITY. DEVIATION FROM THIS DOCUMENT REQUIRES APPROVAL OF HERRIMAN CITY. HERRIMAN CITY CANNOT BE HELD LIABLE FOR MISUSE OR CHANGES REGARDING THIS DOCUMENT.



HERRIMAN CITY
ENGINEERING DEPARTMENT
STREET LIGHT

ARTERIAL SL CONDUIT & POWER LAYOUT

SL-09



DETAIL-SIDEWALK POLE
SCALE: NO SCALE

DETAIL-ARTERIAL POLE
SCALE: NO SCALE

NO.	REVISION DESCRIPTION	DATE

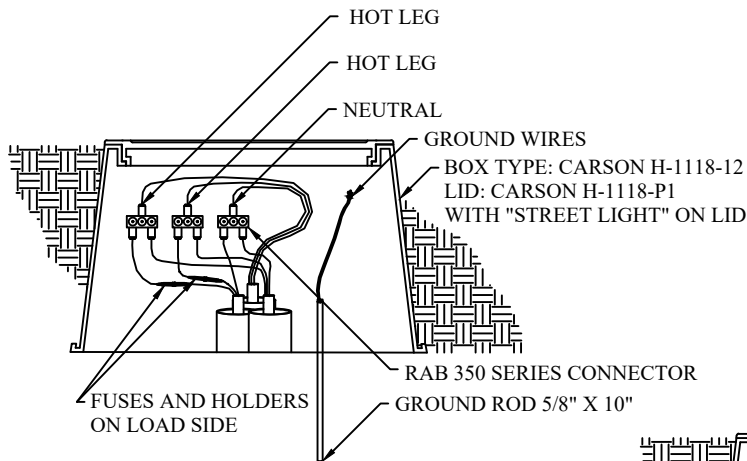
THIS DOCUMENT AND ANY ILLUSTRATIONS HEREON ARE PROVIDED AS STANDARD CONSTRUCTION DETAILS WITHIN HERRIMAN CITY. DEVIATION FROM THIS DOCUMENT REQUIRES APPROVAL OF HERRIMAN CITY. HERRIMAN CITY CANNOT BE HELD LIABLE FOR MISUSE OR CHANGES REGARDING THIS DOCUMENT.



HERRIMAN CITY
ENGINEERING DEPARTMENT
STREET LIGHT
ARTERIAL STREET LIGHT UNDERGROUND DET.

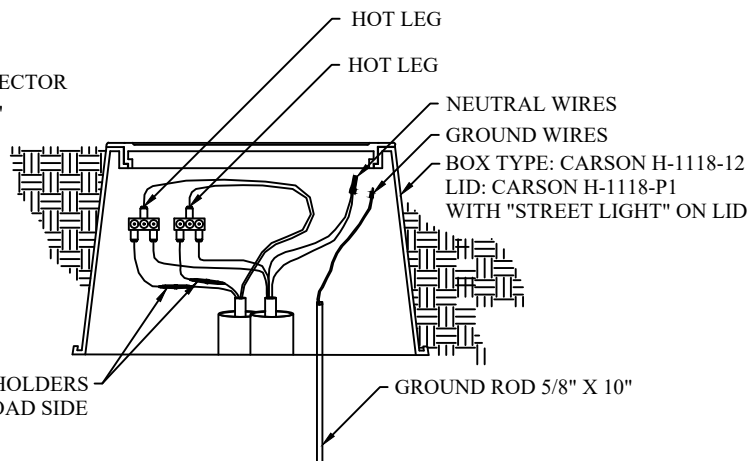
SL-10

Q:\ENGINEERING\PROJECTS\06 MUNICIPAL\2016-17\1617-03 DEV STDS AND REQ UPDATE\5-UPDATED DELIVERABLE\CAD\SECTION 6 STANDARD DRAWINGS\SL\SL-11 ARTERIAL SL WIRING.DWG



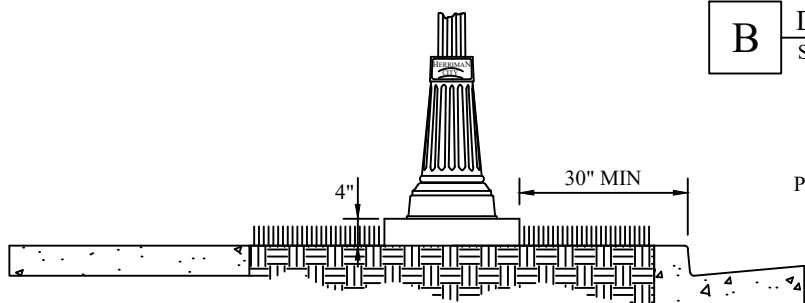
A

DETAIL-SPLICE BOX
SCALE: NO SCALE



B

DETAIL-JUNCTION BOX
SCALE: NO SCALE

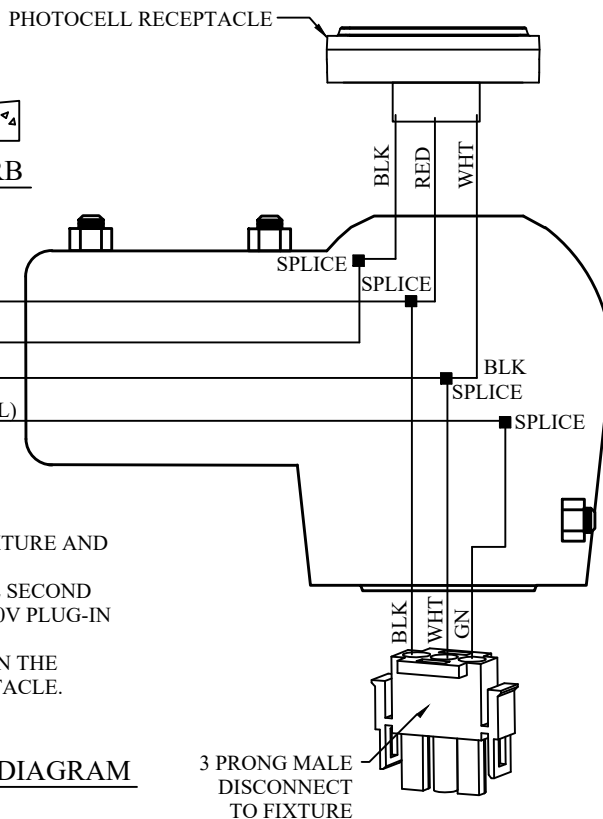


C

DETAIL-POLE SPACING FROM FACE OF CURB
SCALE: NO SCALE

SWITCH LEG TO 120 V
DUPLEX RECEPTACLE

BLK(120V)
RED(120V)
GN(NEUTRAL)



D

DETAIL- COMMERCIAL PLUMBIZER WIRING DIAGRAM
SCALE: NO SCALE

PLUMBIZER NOTES:
1 - THE RED WIRE FEEDS 120V TO BOTH FIXTURE AND OUTLET FROM PHOTOCELL RECEPTACLE. WHEN THE PHOTOCELL SWITCHES ON THE SECOND 120V IS SENT TO THE FIXTURE AND THE 120V PLUG-IN RECEPTACLE ON THE POLE.
2 - ON THE 120 V RECEPTACLE LOCATED ON THE POLE, THE NEUTRAL GOES TO THE RECEPTACLE.

3 PRONG MALE
DISCONNECT
TO FIXTURE

1/13/2021 5:46 AM

NO.	REVISION DESCRIPTION	DATE

THIS DOCUMENT AND ANY ILLUSTRATIONS HEREON ARE PROVIDED AS STANDARD CONSTRUCTION DETAILS WITHIN HERRIMAN CITY. DEVIATION FROM THIS DOCUMENT REQUIRES APPROVAL OF HERRIMAN CITY. HERRIMAN CITY CANNOT BE HELD LIABLE FOR MISUSE OR CHANGES REGARDING THIS DOCUMENT.



HERRIMAN CITY
ENGINEERING DEPARTMENT
STREET LIGHT
ARTERIAL STREET LIGHT WIRING DETAIL

SL-11

Q:\ENGINEERING\PROJECTS\06 MUNICIPAL\2016-17\1617-03 DEV STDs AND REQ UPDATE\5-UPDATED DELIVERABLE\CAD\SECTION 6 STANDARD DRAWINGS\SL\SL-11 ARTERIAL SL WIRING.DWG 1/13/2021 5:47 AM

NOTES:

1. CONTRACTOR SHALL FOLLOW HERRIMAN CITY INSTALLATION AND INSPECTION PROCEDURE FOR LIGHT POLES AND LIGHT FIXTURES BEFORE ACCEPTANCE.
2. ARTERIAL LIGHT POLES SHALL BE LOCATED AS INDICATED ON THE APPROVED LIGHTING SITE PLAN, AND INSTALLED AS DESCRIBED IN THE CITY STANDARDS.
3. EACH COMMERCIAL LIGHT SHALL HAVE A JUNCTION BOX WITH COVER MARKED "STREET LIGHTING" WITH FUSES.
4. SUPPLY SPLICE KIT FOR NEUTRAL WIRE.
5. INSTALL GRAY NON-CONDUCTIVE PVC CONDUITS WITH 24" COVER AND SAND BEDDING.
6. CONTRACTOR TO INSTALL METER CABINET WITH BREAKER PANEL. BOX TO BE LOCATED MIN. 8' FROM UTILITY CO. TRANSFORMER OR SECONDARY BOX (SEE DETAIL SL-12).
7. BALANCE LOADS ACROSS PHASES FOR 120 V RECEPTACLES.
8. VIBRATED 4000 PSI CONCRETE @ 28 DAYS (6.5 CITY MIX).
9. ANY DISTURBED MATERIAL WITHIN 8' OF POLE FOUNDATION SHALL BE COMPACTED TO 90% OR GREATER.
10. UNDISTURBED NATIVE GRAVEL-SANDY GRAVEL ASSUMED. IF DIFFERENT, CONTACT CITY ENGINEER.
11. USE A 30" DIA. SONO TUBE.
12. ELECTRONIC AS-BUILTS MUST BE SENT AS AUTO CAD DWG OR ESRI SHAPEFILE.
13. GROUND AND NEUTRAL SHALL BE SEPARATE.
14. MAINTAIN 3" CLEARANCE ON ALL SIDES OF REBAR.
15. FIELD AS-BUILTS BY CONTRACTOR.
16. LOAD SCHEDULE (COPY GIVEN TO BUILDING DEPARTMENT).
17. FIVE DAY BURN TEST AND REMOVAL OF TAPE.
18. IF DEPTH CANNOT BE MET, MASS MUST BE EQUIVALENT TO MASS AS SHOWN.
19. REBAR AND TRENCH MUST BE INSPECTED PRIOR TO CONCRETE POUR.
20. ALL SPECIFICATIONS FOR WIRE, CONDUIT, FUSE KITS, SPLICE KITS, JUNCTION BOXES AND CONNECTORS MUST BE SUBMITTED TO THE CITY INSPECTOR FOR APPROVAL PRIOR TO ANY WORK BEING PERFORMED.
21. ALL CONDUCTORS SHALL BE TYPE TC-CABLE #112-10-4054 COPPER ONLY.

NO.	REVISION DESCRIPTION	DATE

THIS DOCUMENT AND ANY ILLUSTRATIONS HEREON ARE PROVIDED AS STANDARD CONSTRUCTION DETAILS WITHIN HERRIMAN CITY. DEVIATION FROM THIS DOCUMENT REQUIRES APPROVAL OF HERRIMAN CITY. HERRIMAN CITY CANNOT BE HELD LIABLE FOR MISUSE OR CHANGES REGARDING THIS DOCUMENT.



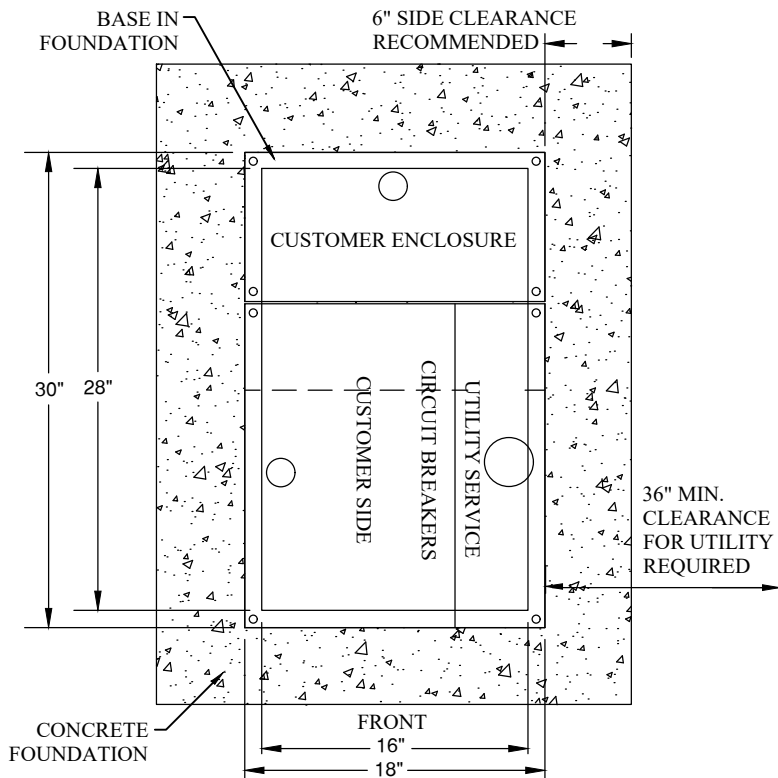
HERRIMAN CITY
ENGINEERING DEPARTMENT
STREET LIGHT

ARTERIAL STREET LIGHT WIRING DETAIL

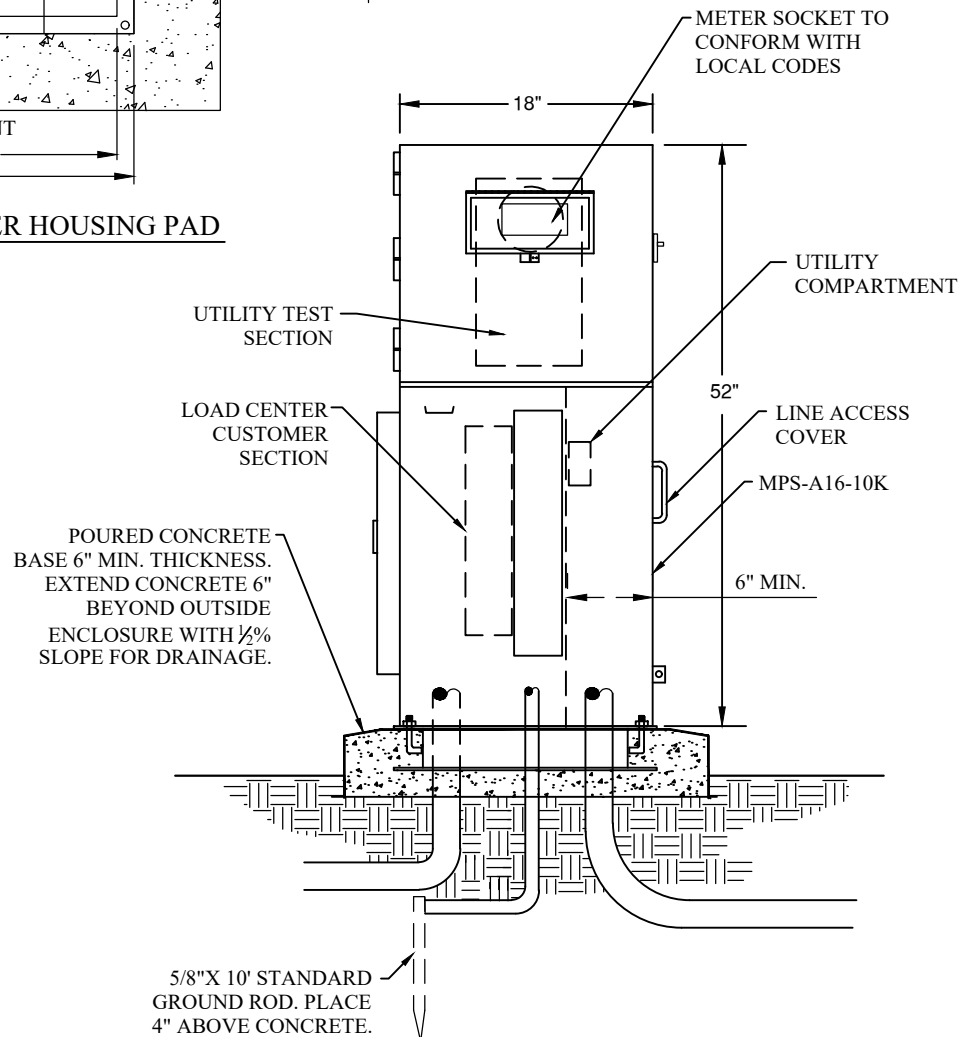
SL-11A

Q:\ENGINEERING\PROJECTS\06 MUNICIPAL\2016-17\1617-03 DEV STDS AND REQ UPDATE\5-UPDATED DELIVERABLE\CAD\SECTION 6 STANDARD DRAWINGS\SL-12 STAINLESS STEEL METER HOUSING.DWG

1/13/2021 5:48 AM



A **DETAIL-METER HOUSING PAD**
SCALE: NO SCALE



B **DETAIL-STAINLESS STEEL METER HOUSING FRONT VIEW**
SCALE: NO SCALE

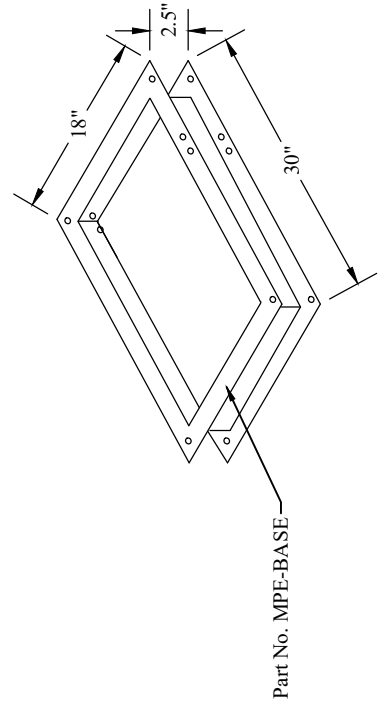
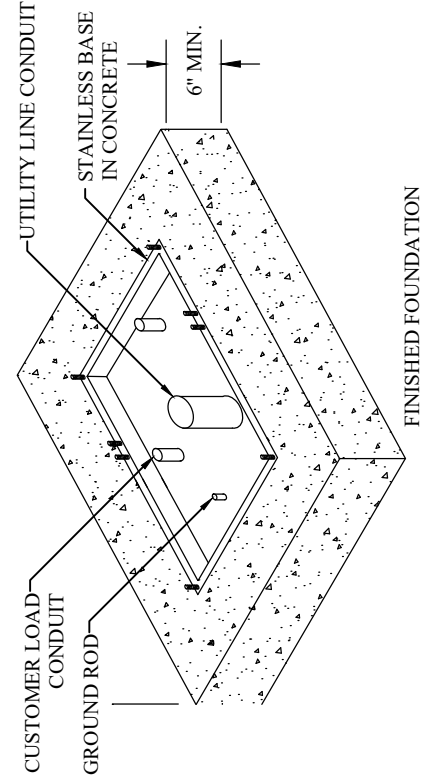
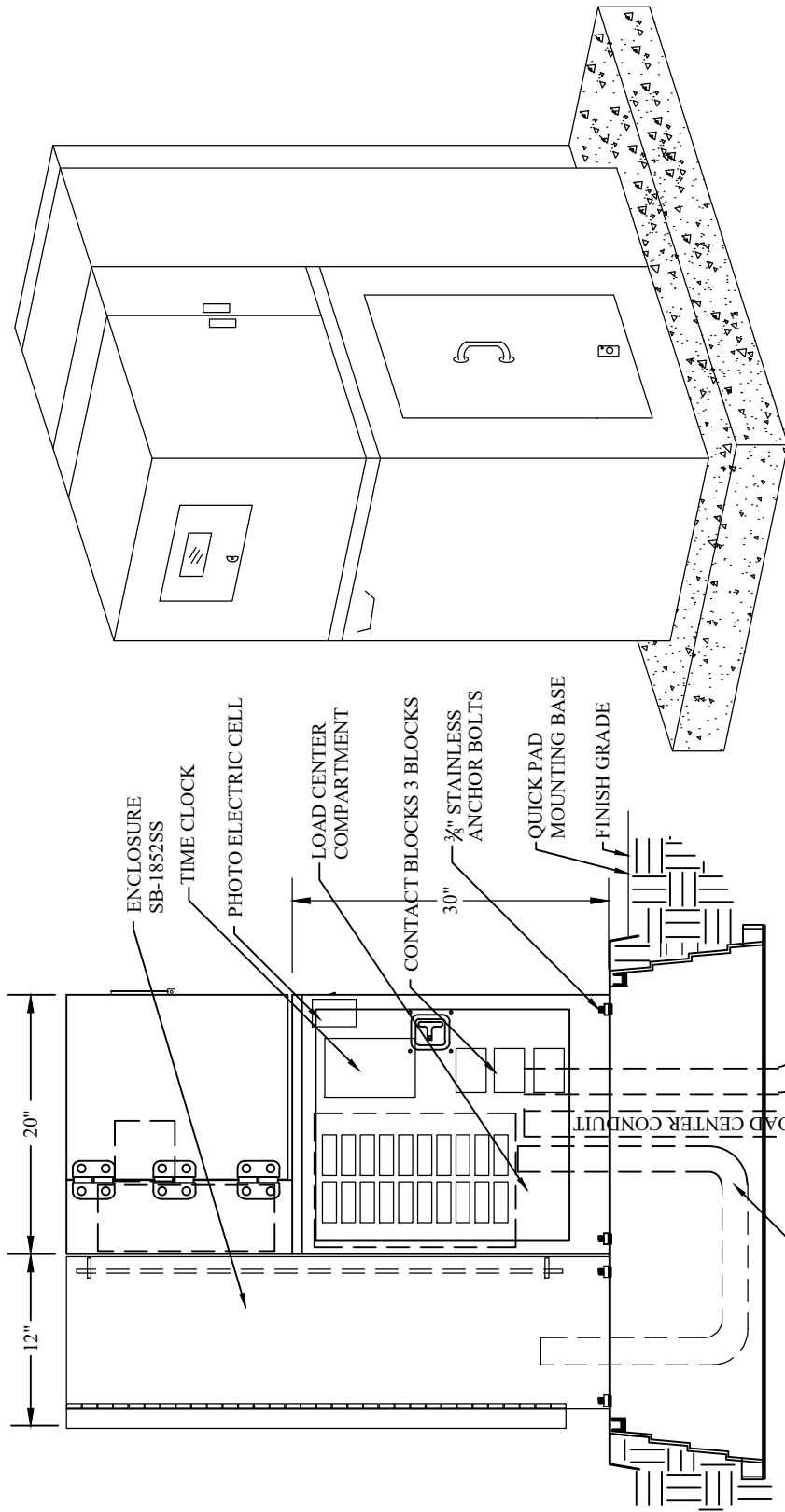
NO.	REVISION DESCRIPTION	DATE

THIS DOCUMENT AND ANY ILLUSTRATIONS HEREON ARE PROVIDED AS STANDARD CONSTRUCTION DETAILS WITHIN HERRIMAN CITY. DEVIATION FROM THIS DOCUMENT REQUIRES APPROVAL OF HERRIMAN CITY. HERRIMAN CITY CANNOT BE HELD LIABLE FOR MISUSE OR CHANGES REGARDING THIS DOCUMENT.



HERRIMAN CITY
ENGINEERING DEPARTMENT
STREET LIGHT
STAINLESS STEEL METER HOUSING DETAIL

SL-12



NO.	REVISION DESCRIPTION	DATE

THIS DOCUMENT AND ANY ILLUSTRATIONS HEREON ARE PROVIDED AS STANDARD CONSTRUCTION DETAILS WITHIN HERRIMAN CITY. DEVIATION FROM THIS DOCUMENT REQUIRES APPROVAL OF HERRIMAN CITY. HERRIMAN CITY CANNOT BE HELD LIABLE FOR MISUSE OR CHANGES REGARDING THIS DOCUMENT.



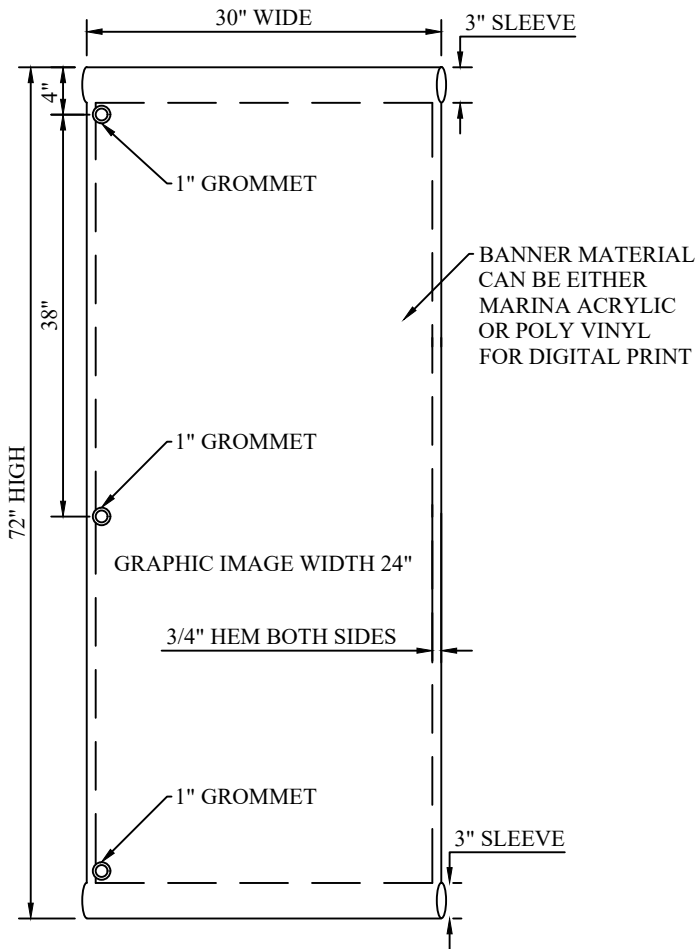
HERRIMAN CITY
ENGINEERING DEPARTMENT
STREET LIGHT
STAINLESS STEEL METER HOUSING DETAIL

SL-12A

1/13/2021 5:50 AM G:\ENGINEERING\PROJECTS\06 MUNICIPAL\2016-17\1617-03 DEV STDS AND REQ UPDATE\5-UPDATED DELIVERABLE\CAD\SECTION 6 STANDARD DRAWINGS\SL-13 BANNER PROGRAM SPECIFICATIONS.DWG

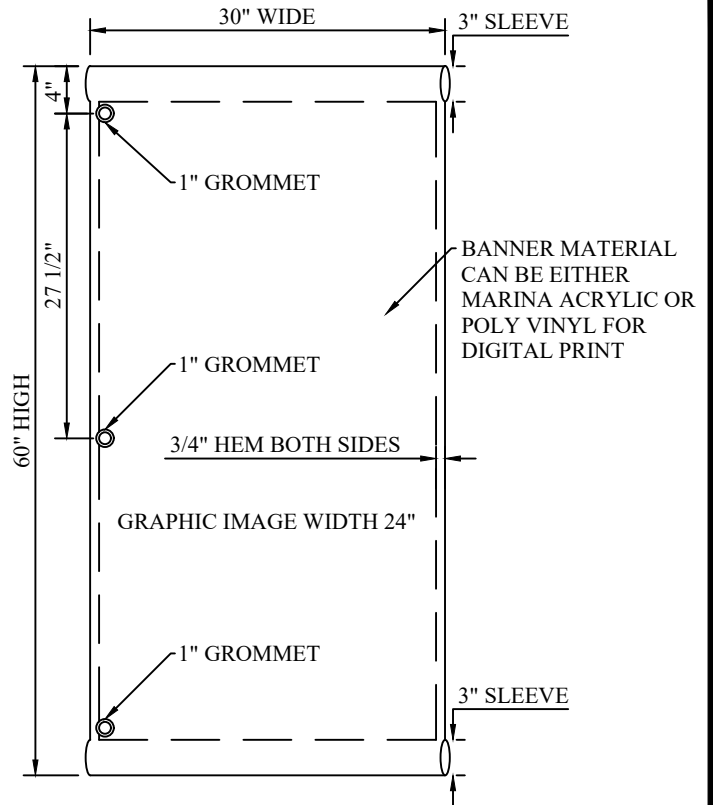
6 FOOT BANNER

SCALE: NO SCALE
FOR 25' AND 28' POLES



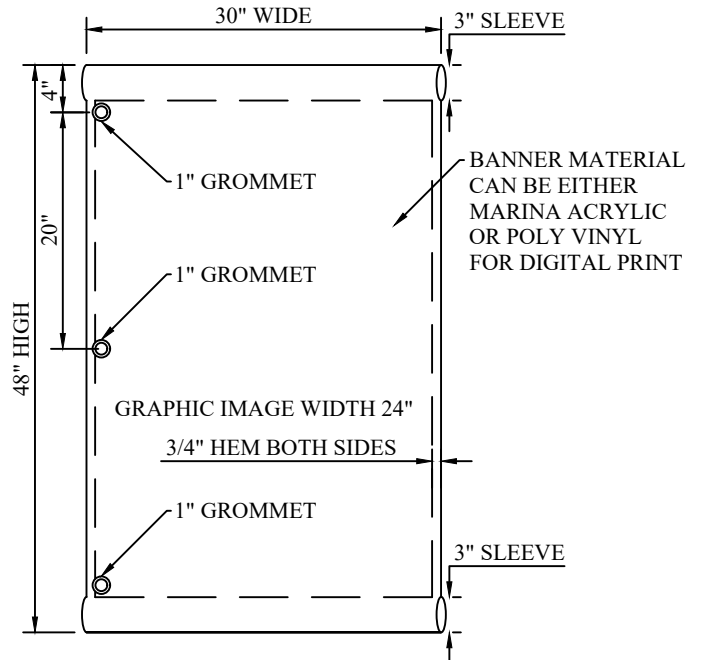
5 FOOT BANNER

SCALE: NO SCALE
FOR 20' TO 28' POLES



4 FOOT BANNER

SCALE: NO SCALE
FOR 14' TO 20' POLES



NO.	REVISION DESCRIPTION	DATE

THIS DOCUMENT AND ANY ILLUSTRATIONS HEREON ARE PROVIDED AS STANDARD CONSTRUCTION DETAILS WITHIN HERRIMAN CITY. DEVIATION FROM THIS DOCUMENT REQUIRES APPROVAL OF HERRIMAN CITY. HERRIMAN CITY CANNOT BE HELD LIABLE FOR MISUSE OR CHANGES REGARDING THIS DOCUMENT.



HERRIMAN CITY
ENGINEERING DEPARTMENT
STREET LIGHT

BANNER PROGRAM SPECIFICATIONS

SL-13