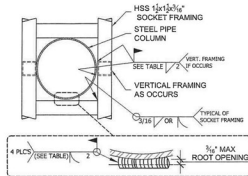
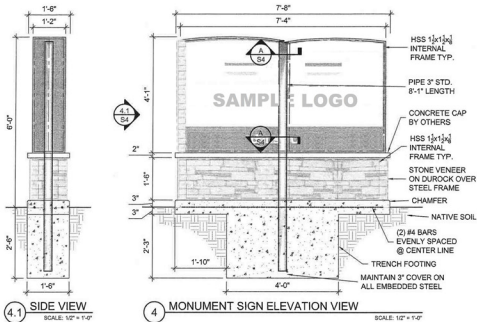


# Sample of Engineered Monument Sign Design



ROOT OPENING	REQ'D WELD SIZE
0 - 3/8"	3/8"
3/8" - 1/2"	1/2"
1/2" - 3/4"	3/4"

(A) HSS SOCKET AT COLUMN

SCALE: NTS

## GENERAL STRUCTURAL NOTES

- DESIGN CRITERIA**
- BUILDING CODE: IBC 2012
  - DEAD LOAD: SIGN CABINETS = 15 PSF FRONT ELEVATION AREA
  - WIND LOAD: V = 105 MPH (3 SECOND GUST), EXPOSURE B (URBAN, SUBURBAN)

- STRUCTURAL STEEL**
- DESIGN AND FABRICATION ACCORDING TO AISC-ASD, 14TH EDITION
  - PIPE: ASTM A53 GRADE B, Fy=35 KSI
  - STEEL TUBE (HSS): ASTM A500 GRADE B, Fy=48 KSI
  - REINFORCING STEEL: ASTM 615 GRADE 60

- WELDING**
- DESIGN AND FABRICATION ACCORDING TO AWS D1.1, CURRENT EDITION
  - ET70X ELECTRODES FOR SMAW PROCESS
  - ER705-X, ET70C-XC ELECTRODES FOR GMAW PROCESSES
  - 3/16" MIN FILLET WELD UNLESS OTHERWISE NOTED

- FOOTING NOTES**
- CONCRETE COMPRESSIVE STRENGTH, f'c = 2800 PSI AT 28 DAYS MIN.
  - CONCRETE PLACEMENT AND QUALITY SHALL BE PER RECOMMENDATIONS IN ACI 614, ACI 301 AND ACI 318. REMOVE ALL DEBRIS FROM FORMS BEFORE PLACING CONCRETE.
  - CONCRETE POURED AGAINST UNDISTURBED NATIVE SOILS
  - NATIVE SOILS ASSUMED TO BE CLAYEY SAND
  - SOIL ALLOWABLE LATERAL BEARING CAPACITY = 150 PSF/FT

- OTHER NOTES**
- REFER TO ART DRAWINGS FOR SIGN FINISHES, COLORS AND LIGHTING SPECIFICATIONS.

Sample Co.

ENGINEERING

1234 S Sample Dr.  
City, UT 84111  
(801) 123-4567

## Revisions

No.	Date	Description
1	1/22/15	
2		
3		
4		
5		



Drawn by: \_\_\_\_\_  
Checked by: \_\_\_\_\_

Project Name  
Address  
City, State Zip

Engineer: \_\_\_\_\_  
Account Exec: \_\_\_\_\_  
Designer: \_\_\_\_\_  
Date: \_\_\_\_\_

Project No.

S4